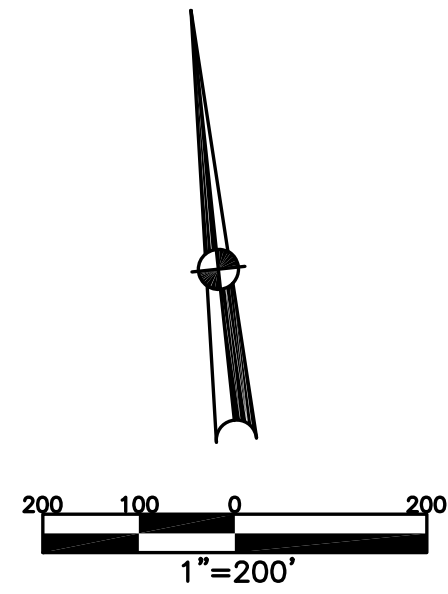


BETHEL TWP.
MIAMI COUNTY, OHIO

FRACTIONAL SECTION 31 TOWN 2 RANGE 9
NE 1/4

PARCEL NUMBER
A01-000000

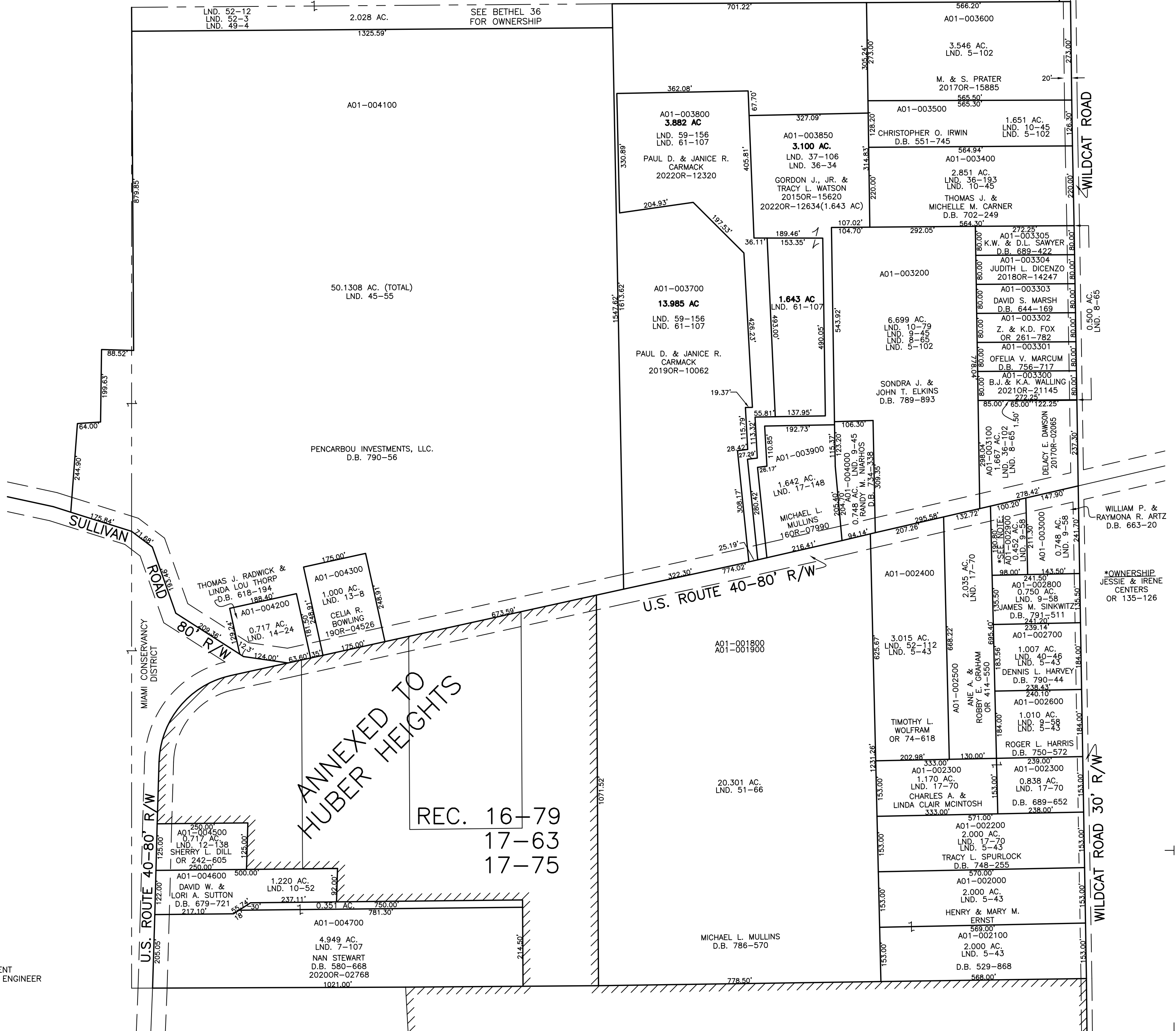
PLAT 35-A



| ABBREVIATION LEGEND | | |
|---------------------|---|----------------------------------|
| 20140R-07759 | = | RECORDER'S DOCUMENT NUMBER |
| OR 257-619 | = | OFFICIAL RECORD 257 PAGE 619 |
| D.B. 613-172 | = | DEED BOOK 613, PAGE 172 |
| REC. 15-72 | = | RECORDER'S PLAT BOOK 15, PAGE 72 |
| LND. 33-15 | = | LAND SURVEY VOLUME 33, PAGE 15 |
| LOT 19-12 | = | LOT SURVEY VOLUME 19, PAGE 12 |
| R.R. 8-29 | = | ROAD RECORD VOLUME 8, PAGE 29 |
| R/W | = | RIGHT OF WAY |
| ⊕ | = | CENTERLINE |
| AC. | = | ACRES |
| TWP. | = | TOWNSHIP |
| TR. | = | TRACT |
| ⊙ | = | LOT CREATED BY RECORDER'S PLAT |

| LINE LEGEND | | |
|-------------|---|-------------------|
| | = | Blow-up Boundary |
| | = | Property Line |
| | = | Lot Split Line |
| | = | Section Line |
| | = | Centerline |
| | = | Right-of-Way Line |
| | = | Corporation Line |

| SURVEY INDEX | | |
|--------------|-------------|------------|
| LND. 5-43 | LND. 36-34 | REC. 16-79 |
| LND. 5-96 | LND. 36-102 | REC. 17-63 |
| LND. 5-102 | LND. 36-193 | REC. 17-75 |
| LND. 5-124 | LND. 37-106 | |
| LND. 7-107 | LND. 40-46 | |
| LND. 8-65 | LND. 45-55 | |
| LND. 9-45 | LND. 49-4 | |
| LND. 9-58 | LND. 51-66 | |
| LND. 10-45 | LND. 52-3 | |
| LND. 10-52 | LND. 52-112 | |
| LND. 10-79 | | |
| LND. 12-138 | | |
| LND. 13-8 | | |
| LND. 13-20 | | |
| LND. 14-24 | | |
| LND. 17-70 | | |
| LND. 17-148 | | |
| LND. 19-71 | | |
| LND. 21-188 | | |



PREPARED BY: MIAMI COUNTY ENGINEER'S MAP DEPARTMENT
PAUL P. HUELSKAMP, P.E., P.S., COUNTY ENGINEER
DATE: DECEMBER 8, 2015 MB
REVISED: August 26, 2022 MSTORMS