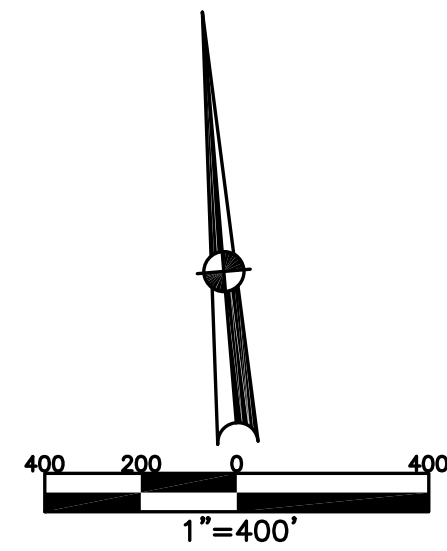


BETHEL TWP.  
MIAMI COUNTY, OHIO

FRACTIONAL  
SECTION 31 TOWN 2 RANGE 9

PARCEL NUMBER  
A01-\_\_\_\_\_

PLAT 35



**ABBREVIATION LEGEND**

2014OR-07759 = RECORDER'S DOCUMENT NUMBER  
OR 257-619 = OFFICIAL RECORD 257 PAGE 619  
D.B. 613-172 = DEED BOOK 613, PAGE 172  
REC. 15-72 = RECORDER'S PLAT BOOK 15, PAGE 72  
LND. 33-15 = LAND SURVEY VOLUME 33, PAGE 15  
LOT 19-12 = LOT SURVEY VOLUME 19, PAGE 12  
R.R. 8-29 = ROAD RECORD VOLUME 8, PAGE 29  
R/W = RIGHT OF WAY  
C = CENTERLINE  
AC. = ACRES  
TWP. = TOWNSHIP  
TR. = TRACT  
② = LOT CREATED BY RECORDER'S PLAT

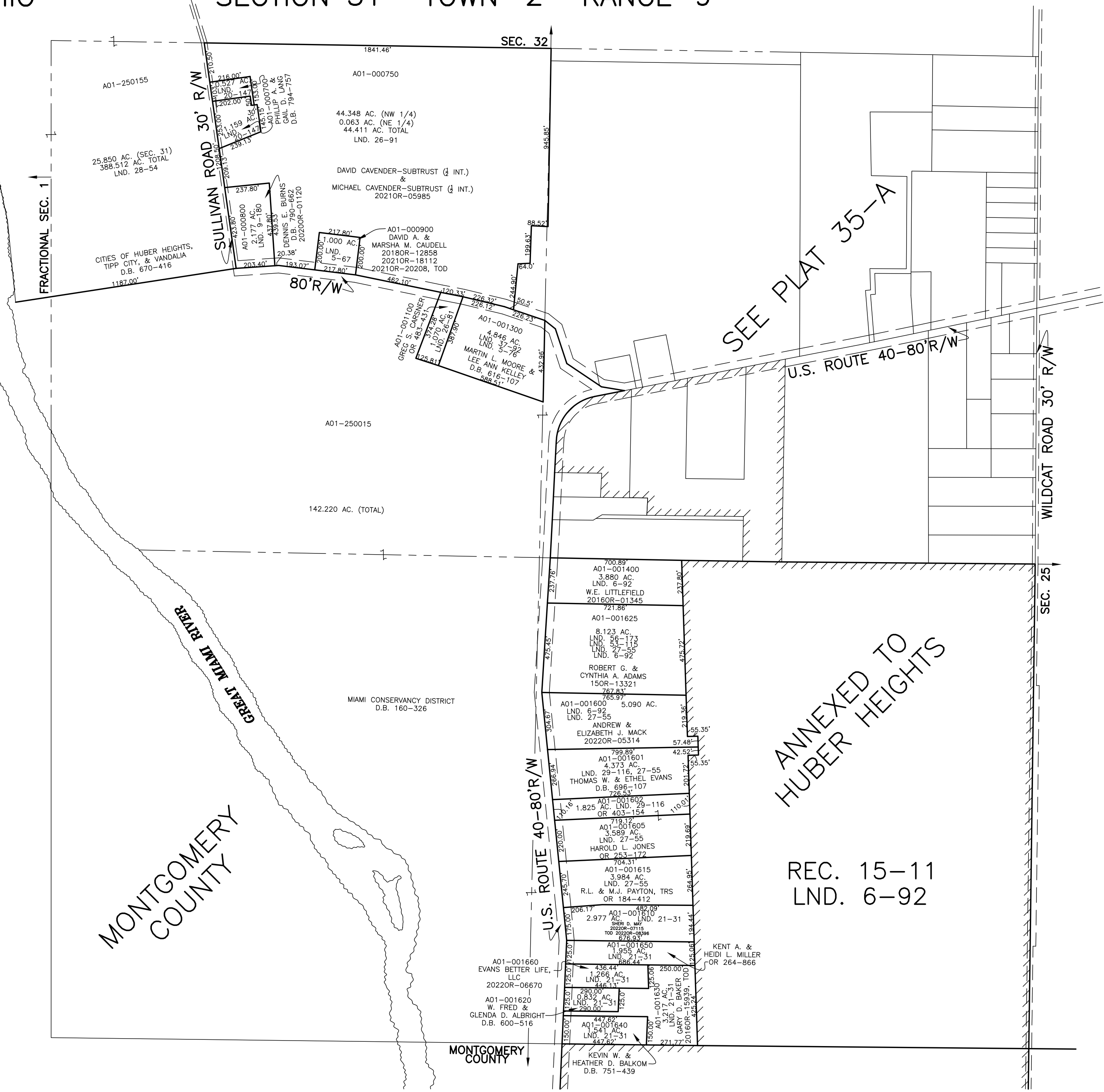
**LINE LEGEND**

———— Blow-up Boundary  
———— Property Line  
- - - - Lot Split Line  
- - - - Section Line  
———— Centerline  
———— Right-of-Way Line  
////// Corporation Line

**SURVEY INDEX**

NORTHEAST QUARTER	
SOUTHEAST QUARTER	
LND. 6-92 LND. 21-31 LND. 27-55 LND. 29-116 LND. 53-115 LND. 56-175	REC. 15-11
SOUTHWEST QUARTER	
NORTHWEST QUARTER	
LND. 5-67 LND. 5-76 LND. 9-180 LND. 20-147 LND. 26-81 LND. 26-91 LND. 28-54 LND. 37-92 LND. 45-55	

PREPARED BY: MIAMI COUNTY ENGINEER'S MAP DEPARTMENT  
PAUL P. HUELSKAMP, P.E., P.S., COUNTY ENGINEER  
DATE: DECEMBER 9, 2015 MB  
REVISED: May 5, 2022 KCONNORS



SEE PLAT 35-A

ANNEXED TO  
HUBER HEIGHTS

REC. 15-11  
LND. 6-92

MONTGOMERY  
COUNTY

MONTGOMERY  
COUNTY