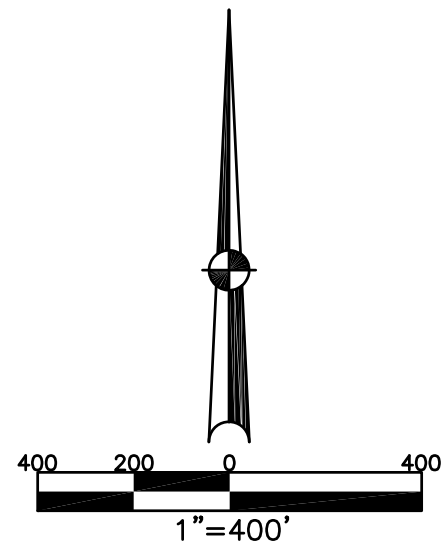


BETHEL TWP.
MIAMI COUNTY, OHIO

SECTION 30 TOWN 2 RANGE 9

PARCEL NUMBER
A01-XXXXXX

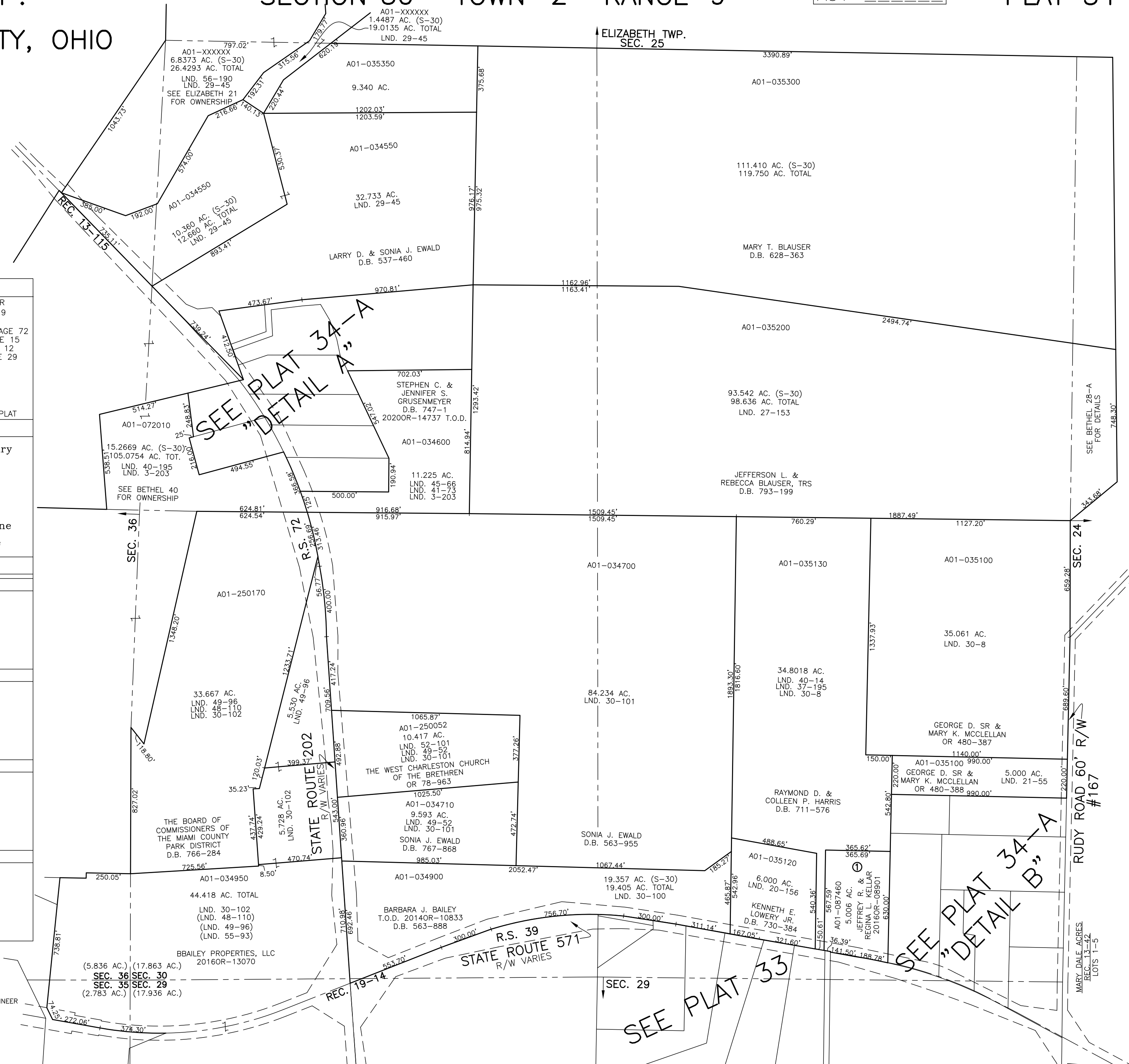
PLAT 34



ABBREVIATION LEGEND	
2014OR-07759	= RECORDER'S DOCUMENT NUMBER
OR 257-619	= OFFICIAL RECORD 257 PAGE 619
D.B. 613-172	= DEED BOOK 613, PAGE 172
REC. 15-72	= RECORDER'S PLAT BOOK 15, PAGE 72
LND. 33-15	= LAND SURVEY VOLUME 33, PAGE 15
LOT 19-12	= LOT SURVEY VOLUME 19, PAGE 12
R.R. 8-29	= ROAD RECORD VOLUME 8, PAGE 29
R/W	= RIGHT OF WAY
CL	= CENTERLINE
AC.	= ACRES
TWP.	= TOWNSHIP
TR.	= TRACT
Ⓢ	= LOT CREATED BY RECORDER'S PLAT

LINE LEGEND	
	Blow-up Boundary
	Property Line
	Lot Split Line
	Section Line
	Centerline
	Right-of-Way Line
	Corporation Line

SURVEY INDEX	
NORTHEAST QUARTER	
LND. 27-153	
SOUTHEAST QUARTER	
LND. 19-151	REC. 13-42
LND. 20-156	REC. 19-14
LND. 21-155	
LND. 22-155	R.S. 39
LND. 23-155	
LND. 24-155	
LND. 25-100	
LND. 26-101	
LND. 27-195	
LND. 28-109	
LND. 29-101	
LND. 30-102	
LND. 31-102	
LND. 32-102	
LND. 33-102	
LND. 34-102	
LND. 35-102	
LND. 36-102	
LND. 37-102	
LND. 38-102	
LND. 39-102	
LND. 40-102	
LND. 41-102	
LND. 42-102	
LND. 43-102	
LND. 44-133	
LND. 45-25	
SOUTHWEST QUARTER	
LND. 3-203	REC. 19-14
LND. 7-39	
LND. 10-100	R.S. 39
LND. 11-101	R.S. 72
LND. 12-102	
LND. 13-102	
LND. 14-102	
LND. 15-102	
LND. 16-102	
LND. 17-102	
LND. 18-102	
LND. 19-102	
LND. 20-102	
LND. 21-102	
LND. 22-102	
LND. 23-102	
LND. 24-102	
LND. 25-102	
LND. 26-102	
LND. 27-102	
LND. 28-102	
LND. 29-102	
LND. 30-102	
LND. 31-102	
LND. 32-102	
LND. 33-102	
LND. 34-102	
LND. 35-102	
LND. 36-102	
LND. 37-102	
LND. 38-102	
LND. 39-102	
LND. 40-102	
LND. 41-102	
LND. 42-102	
LND. 43-102	
LND. 44-133	
LND. 45-25	
NORTHWEST QUARTER	
LND. 3-203	R.S. 72
LND. 7-153	
LND. 10-101	
LND. 13-102	
LND. 16-102	
LND. 19-102	
LND. 22-102	
LND. 25-102	



PREPARED BY: MIAMI COUNTY ENGINEER'S MAP DEPARTMENT
PAUL P. HUELSKAMP, P.E., P.S., COUNTY ENGINEER
DATE: MAY 5, 2016 MB
REVISED: OCTOBER 24, 2016 CH