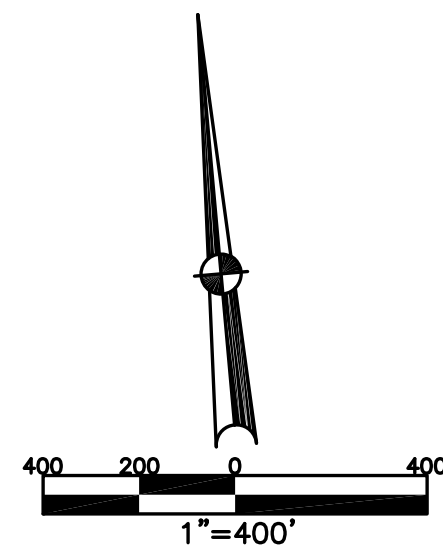


BETHEL TWP.
MIAMI COUNTY, OHIO

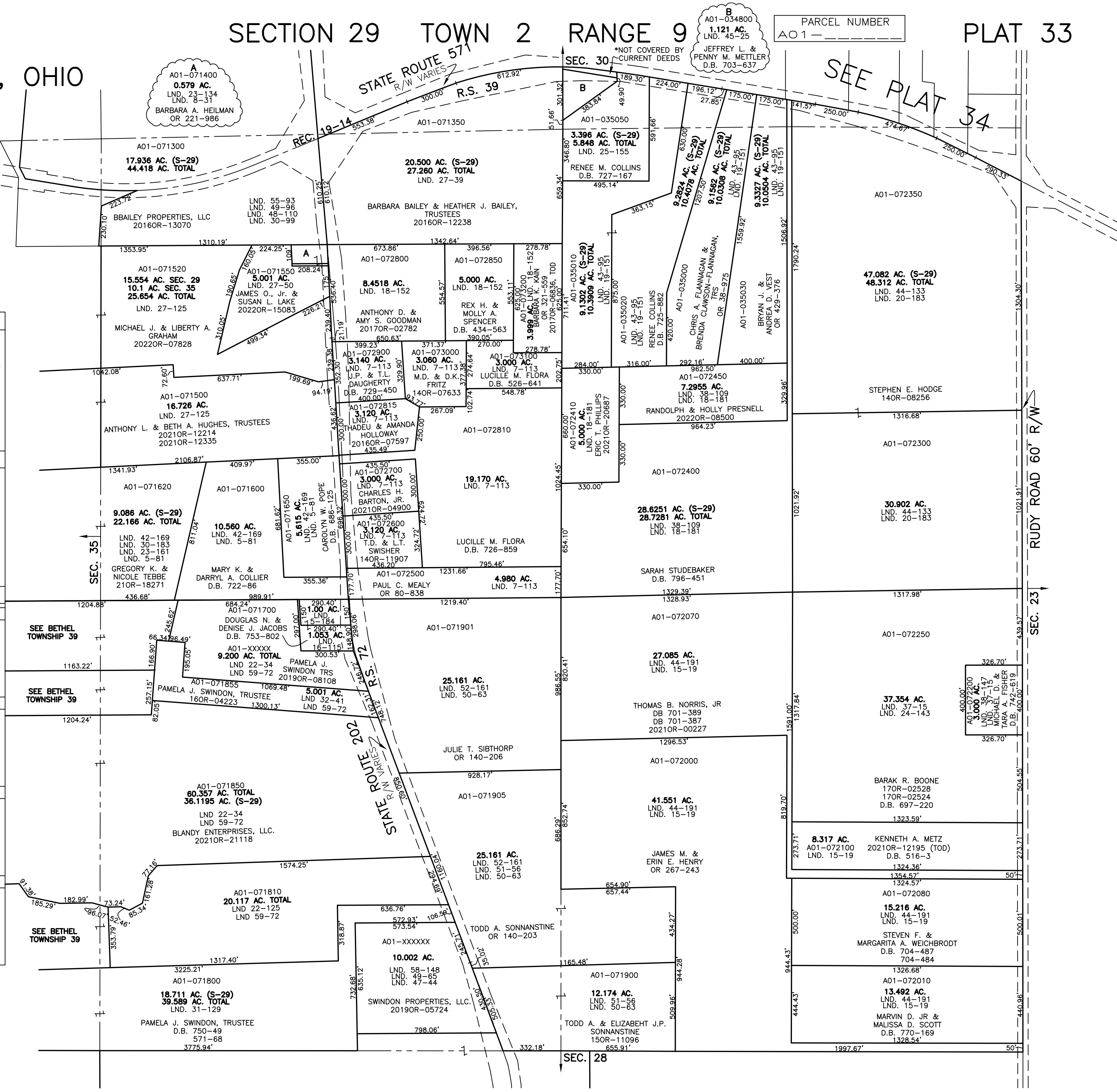
SECTION 29 TOWN 2 RANGE 9 PLAT 33



ABBREVIATION LEGEND		
2014OR-07759	=	RECORDER'S DOCUMENT NUMBER
OR 257-619	=	OFFICIAL RECORD 257 PAGE 619
D.B. 613-172	=	DEED BOOK 613, PAGE 172
REC. 15-72	=	RECORDER'S PLAT BOOK 15, PAGE 72
LND. 33-15	=	LAND SURVEY VOLUME 33, PAGE 15
LOT 19-12	=	LOT SURVEY VOLUME 19, PAGE 12
R.R. 8-29	=	ROAD RECORD VOLUME 8, PAGE 29
R/W	=	RIGHT OF WAY
⊕	=	CENTERLINE
AC.	=	ACRES
TWP.	=	TOWNSHIP
TR.	=	TRACT
Ⓢ	=	LOT CREATED BY RECORDER'S PLAT

LINE LEGEND		
—	Blow-up Boundary	
—	Property Line	
- - - -	Lot Split Line	
- - - -	Section Line	
- - - -	Centerline	
- - - -	Right-of-Way Line	
////	Corporation Line	

SURVEY INDEX		
NORTHEAST QUARTER		
LND. 18-181	LND. 44-133	REC. 13-42
LND. 19-151	LND. 55-132	REC. 19-14
LND. 20-183		R.S. 39
LND. 25-155		
LND. 38-109		
LND. 39-156		
LND. 42-55		
LND. 43-95		
SOUTHEAST QUARTER		
LND. 15-19		
LND. 24-143		
LND. 37-15		
LND. 38-147		
LND. 44-191		
LND. 50-63		
LND. 51-56		
LND. 52-161		
SOUTHWEST QUARTER		
LND. 5-184	LND. 50-63	R.S. 72
LND. 16-115	LND. 51-56	
LND. 22-34	LND. 52-161	
LND. 22-125	LND. 58-148	
LND. 22-129		
LND. 32-41		
LND. 47-44		
LND. 49-65		
NORTHWEST QUARTER		
LND. 5-81	LND. 27-125	LND. 53-92
LND. 7-113	LND. 30-99	LND. 55-93
LND. 8-31	LND. 30-100	LND. 59-72
LND. 18-152	LND. 30-102	
LND. 23-134	LND. 30-183	
LND. 23-161	LND. 42-169	REC. 19-14
LND. 27-39	LND. 48-110	R.S. 39
LND. 27-50	LND. 49-96	R.S. 72



PREPARED BY: MIAMI COUNTY ENGINEER'S MAP DEPARTMENT
PAUL P. HUELSKAMP, P.E., P.S., COUNTY ENGINEER
DATE: APRIL 28, 2016 MB
REVISED: October 18, 2022 MSTORMS