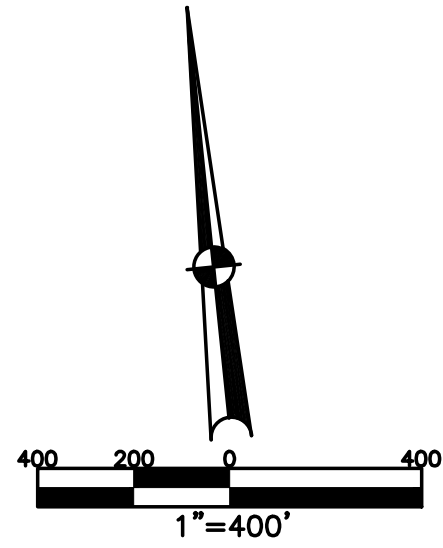


BETHEL TWP.
MIAMI COUNTY, OHIO

SECTION 26 TOWN 2 RANGE 9

PARCEL NUMBER
AO1 -

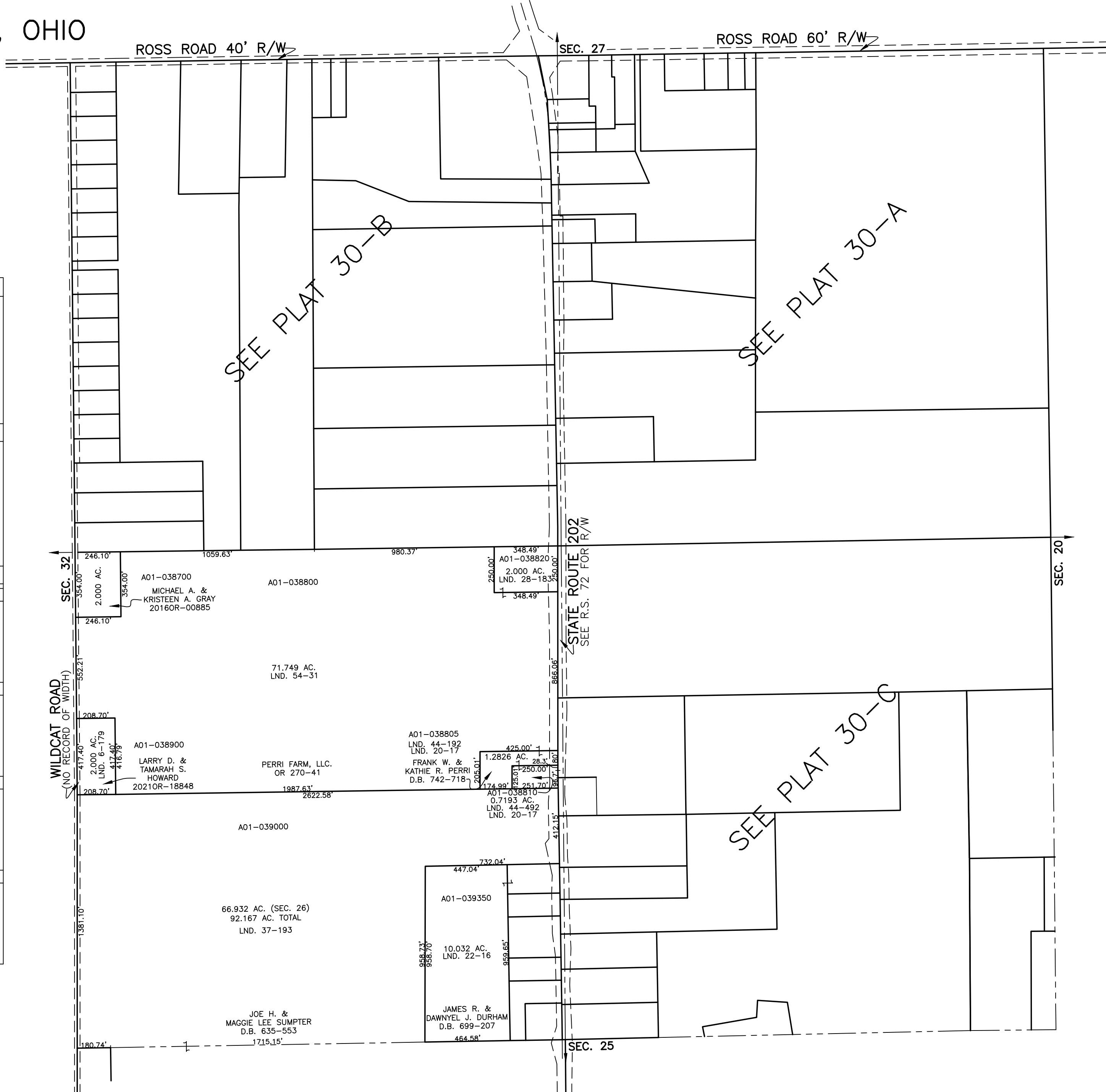
PLAT 30



ABBREVIATION LEGEND		
2014OR-07759	=	RECORDER'S DOCUMENT NUMBER
OR 257-619	=	OFFICIAL RECORD 257 PAGE 619
D.B. 613-172	=	DEED BOOK 613, PAGE 172
REC. 15-72	=	RECORDER'S PLAT BOOK 15, PAGE 72
LND. 33-15	=	LAND SURVEY VOLUME 33, PAGE 15
LOT 19-12	=	LOT SURVEY VOLUME 19, PAGE 12
R.R. 8-29	=	ROAD RECORD VOLUME 8, PAGE 29
R/W	=	RIGHT OF WAY
CL	=	CENTERLINE
AC.	=	ACRES
TWP.	=	TOWNSHIP
TR.	=	TRACT
Ⓢ	=	LOT CREATED BY RECORDER'S PLAT

LINE LEGEND	
	Blow-up Boundary
	Property Line
	Lot Split Line
	Section Line
	Centerline
	Right-of-Way Line
	Corporation Line

SURVEY INDEX		
NORTHEAST QUARTER		
SOUTHEAST QUARTER		
SOUTHWEST QUARTER		
LND. 1-178 LND. 6-176 LND. 6-179 LND. 11-93 LND. 12-112 LND. 14-199 LND. 15-85 LND. 20-17 LND. 22-16 LND. 28-183 LND. 31-108 LND. 37-193 LND. 40-88 LND. 41-99	LND. 44-192 LND. 54-31	R.S. 72
NORTHWEST QUARTER		



PREPARED BY: MIAMI COUNTY ENGINEER'S MAP DEPARTMENT
PAUL P. HUELSKAMP, P.E., P.S., COUNTY ENGINEER
DATE: DECEMBER 1, 2015 MB
REVISED: JANUARY 28, 2016 DS