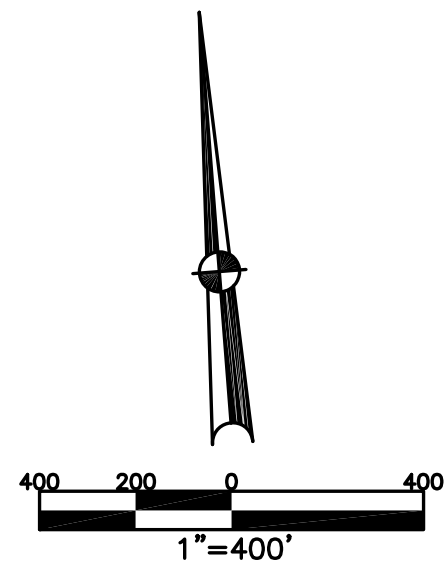


BETHEL TWP.
MIAMI COUNTY, OHIO

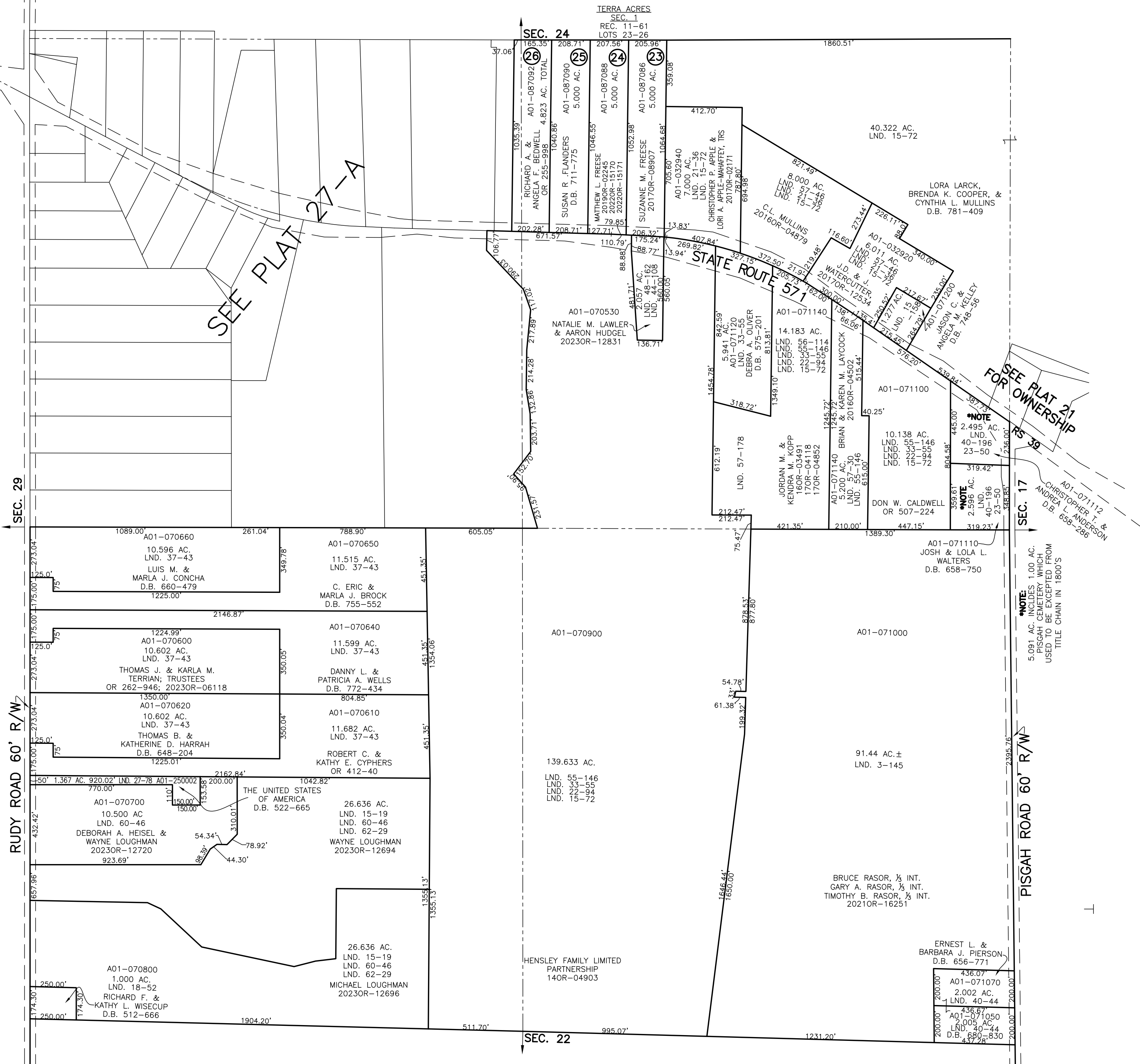
SECTION 23 TOWN 2 RANGE 9

PARCEL NUMBER
A01- - - - -

PLAT 27



ABBREVIATION LEGEND		
20140R-07759	=	RECORDER'S DOCUMENT NUMBER
OR 257-619	=	OFFICIAL RECORD 257 PAGE 619
D.B. 613-172	=	DEED BOOK 613, PAGE 172
REC. 15-72	=	RECORDER'S PLAT BOOK 15, PAGE 72
LND. 33-15	=	LAND SURVEY VOLUME 33, PAGE 15
LOT 19-12	=	LOT SURVEY VOLUME 19, PAGE 12
R.R. 8-29	=	ROAD RECORD VOLUME 8, PAGE 29
R/W	=	RIGHT OF WAY
C	=	CENTERLINE
AC.	=	ACRES
TWP.	=	TOWNSHIP
TR.	=	TRACT
Ⓢ	=	LOT CREATED BY RECORDER'S PLAT
LINE LEGEND		
	=	Blow-up Boundary
	=	Property Line
	=	Lot Split Line
	=	Section Line
	=	Centerline
	=	Right-of-Way Line
	=	Corporation Line
SURVEY INDEX		
NORTHEAST QUARTER		
LND. 9-179	LND. 44-108	REC. 11-13
LND. 15-72	LND. 46-48	REC. 11-61
LND. 15-158	LND. 48-162	
LND. 21-36	LND. 55-146	RS 39
LND. 22-94	LND. 56-114	
LND. 23-50	LND. 57-30	
LND. 32-59	LND. 57-45	
LND. 33-55	LND. 57-178	
LND. 40-196		
SOUTHEAST QUARTER		
LND. 1-69		
LND. 3-145		
LND. 15-72		
LND. 22-94		
LND. 33-55		
LND. 40-44		
LND. 55-146		
SOUTHWEST QUARTER		
LND. 15-19		
LND. 15-72		
LND. 18-52		
LND. 22-94		
LND. 24-143		
LND. 27-78		
LND. 33-55		
LND. 37-43		
LND. 55-146		



PREPARED BY: MIAMI COUNTY ENGINEER'S MAP DEPARTMENT
PAUL P. HUELSKAMP, P.E., P.S., COUNTY ENGINEER
AUGUST 11, 2015 MB

REVISED: November 21, 2023 DJACQUEMIN