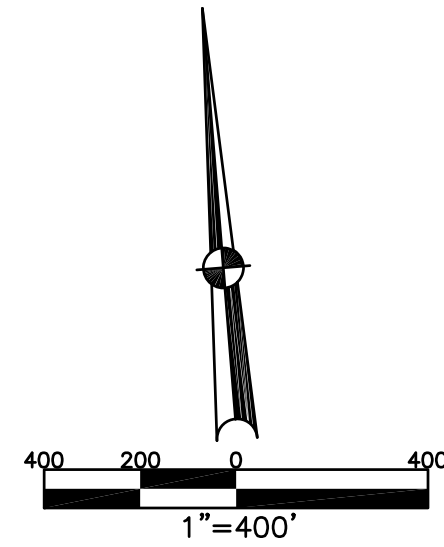


BETHEL TWP.
MIAMI COUNTY, OHIO

SECTION 18 TOWN 2 RANGE 9

PARCEL NUMBER
AO1 -
AO2 -

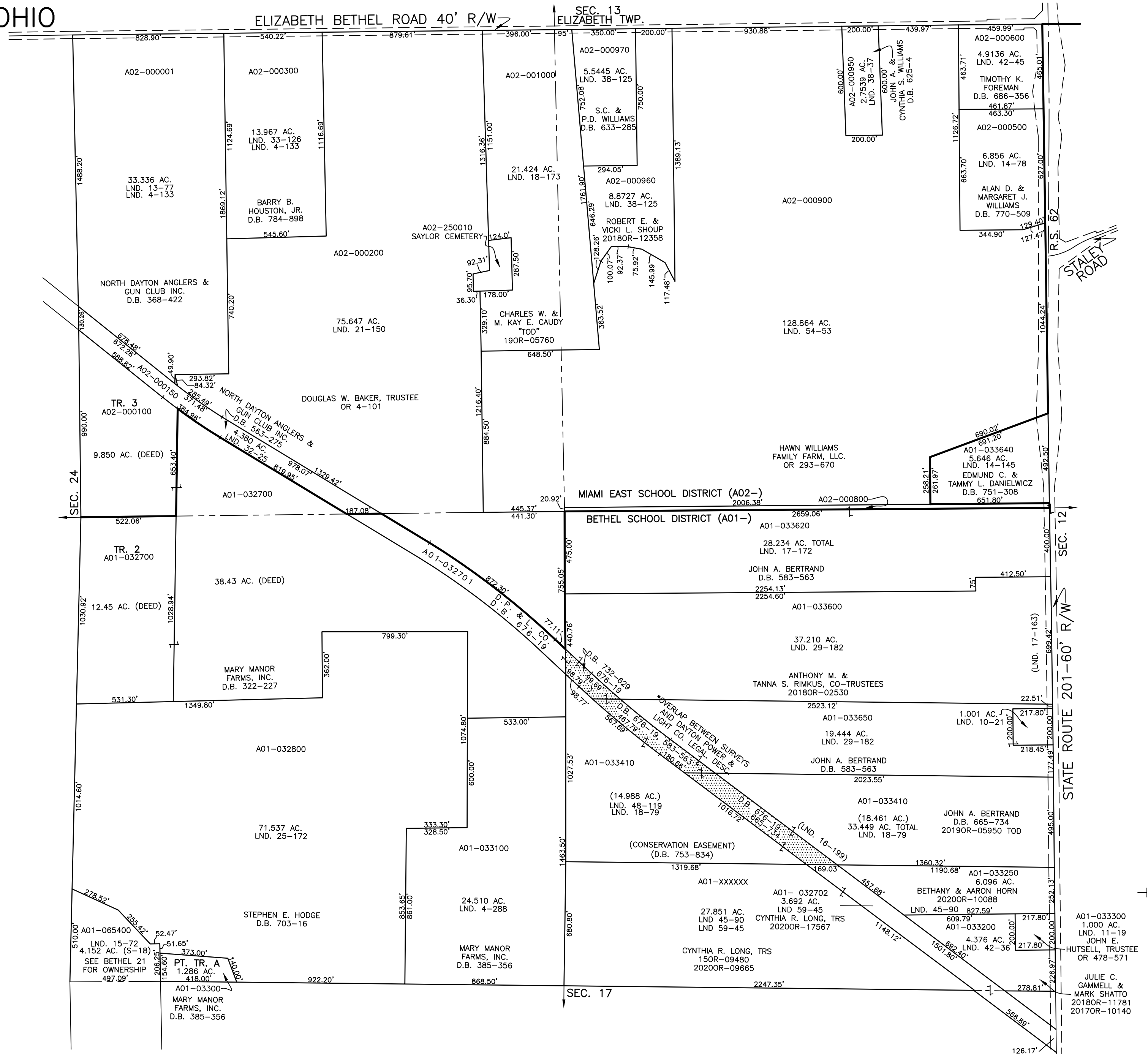
PLAT 22



ABBREVIATION LEGEND		
2014OR-07759	=	RECORDER'S DOCUMENT NUMBER
OR 257-619	=	OFFICIAL RECORD 257 PAGE 619
D.B. 613-172	=	DEED BOOK 613, PAGE 172
REC. 15-72	=	RECORDER'S PLAT BOOK 15, PAGE 72
LND. 33-15	=	LAND SURVEY VOLUME 33, PAGE 15
LOT 19-12	=	LOT SURVEY VOLUME 19, PAGE 12
R.R. 8-29	=	ROAD RECORD VOLUME 8, PAGE 29
R/W	=	RIGHT OF WAY
C	=	CENTERLINE
AC.	=	ACRES
TWP.	=	TOWNSHIP
TR.	=	TRACT
Ⓢ	=	LOT CREATED BY RECORDER'S PLAT
LINE LEGEND		
	=	Blow-up Boundary
	=	Property Line
	=	Lot Split Line
	=	Section Line
	=	Centerline
	=	Right-of-Way Line
	=	Corporation Line
SURVEY INDEX		
NORTHEAST QUARTER		
LND. 1-222	LND. 54-53	R.S. 62
LND. 14-78		
LND. 14-145		
LND. 17-172		
LND. 18-173		
LND. 38-37		
LND. 38-125		
LND. 42-45		
SOUTHEAST QUARTER		
LND. 1-222	LND. 29-182	
LND. 4-157	LND. 42-36	
LND. 10-21	LND. 45-90	
LND. 11-19	LND. 59-45	
LND. 16-199		
LND. 17-163		
LND. 17-172		
LND. 18-79		
SOUTHWEST QUARTER		
LND. 1-222		
LND. 3-474		
LND. 4-288		
LND. 15-72		
LND. 25-172		
NORTHWEST QUARTER		
LND. 1-222		
LND. 4-133		
LND. 13-77		
LND. 18-173		
LND. 21-150		
LND. 33-126		

PREPARED BY: MIAMI COUNTY ENGINEER'S MAP DEPARTMENT
PAUL P. HUELSKAMP, P.E., P.S., COUNTY ENGINEER
DATE: MARCH 25, 2016 MB

REVISED: November 24, 2020 CSHOUP



A01-033300
1.000 AC.
LND. 11-19
JOHN E.
HUTSELL, TRUSTEE
OR 478-571

JULIE C.
GAMMELL &
MARK SHATTO
2018OR-11781
2017OR-10140