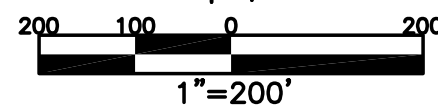
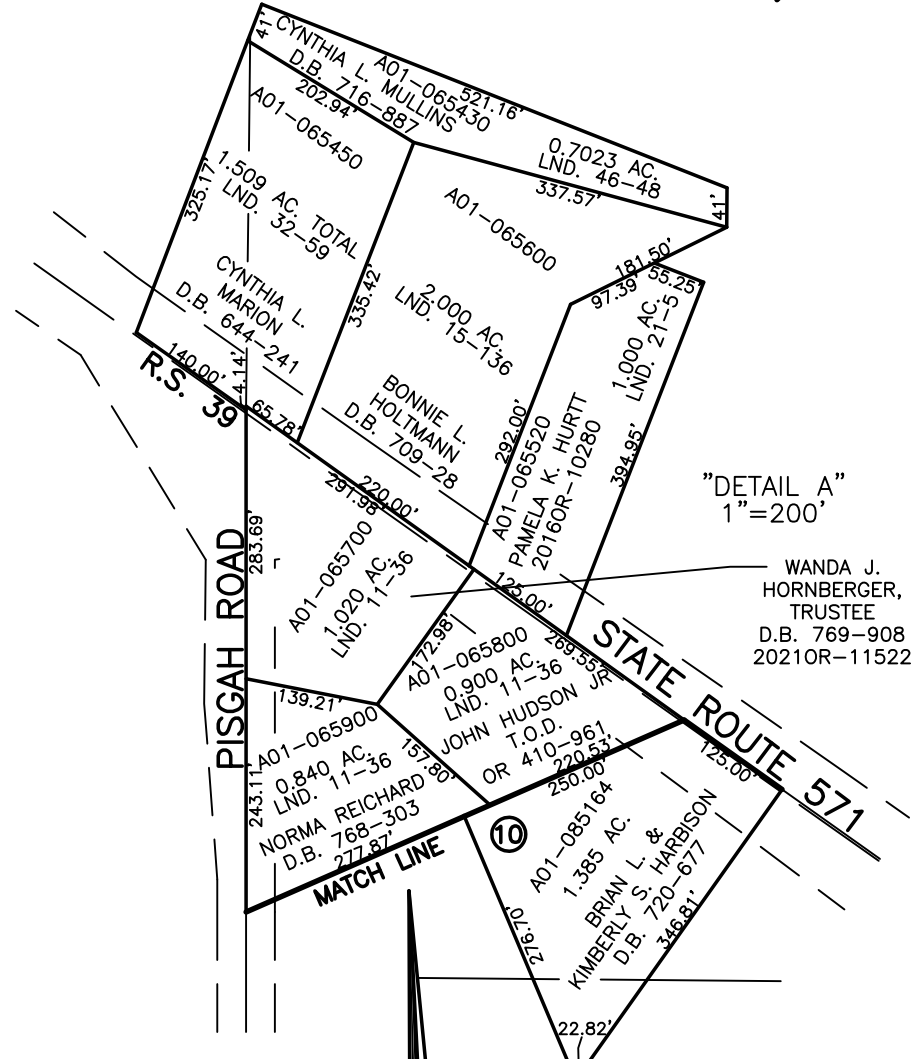


BETHEL TWP.  
MIAMI COUNTY, OHIO

SECTION 17 TOWN 2 RANGE 9  
SW 1/4

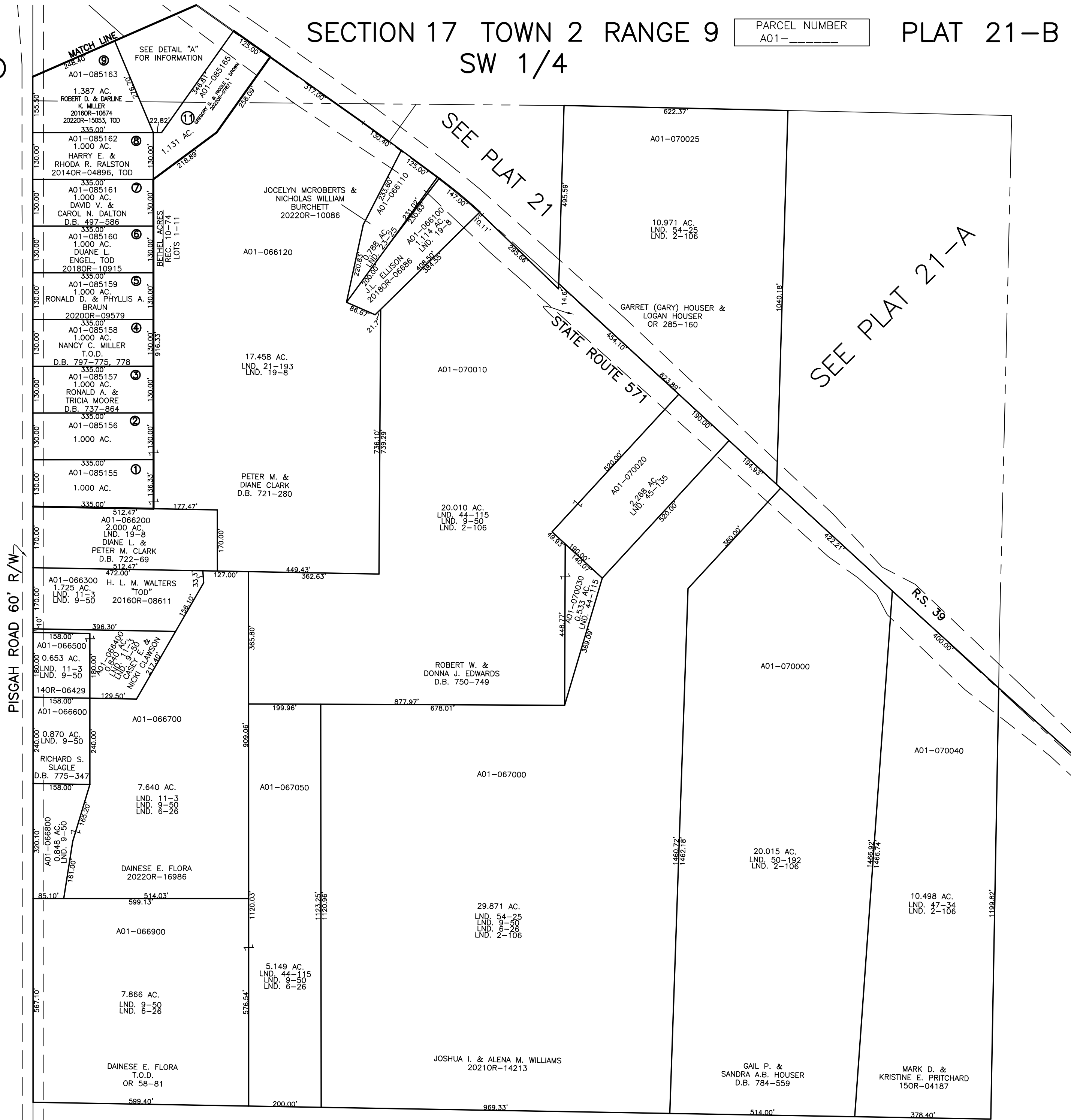
PARCEL NUMBER  
A01-\_\_\_\_\_

PLAT 21-B



ABBREVIATION LEGEND		
20140R-07759	=	RECORDER'S DOCUMENT NUMBER
OR 257-619	=	OFFICIAL RECORD 257 PAGE 619
D.B. 613-172	=	DEED BOOK 613, PAGE 172
REC. 15-72	=	RECORDER'S PLAT BOOK 15, PAGE 72
LND. 33-15	=	LAND SURVEY VOLUME 33, PAGE 15
LOT 19-12	=	LOT SURVEY VOLUME 19, PAGE 12
R.R. 8-29	=	ROAD RECORD VOLUME 8, PAGE 29
R/W	=	RIGHT OF WAY
CL	=	CENTERLINE
AC	=	ACRES
TWP.	=	TOWNSHIP
TR.	=	TRACT
②	=	LOT CREATED BY RECORDER'S PLAT
LINE LEGEND		
	=	Blow-up Boundary
	=	Property Line
	=	Lot Split Line
	=	Section Line
	=	Centerline
	=	Right-of-Way Line
	=	Corporation Line
SURVEY INDEX		
LND. 1-123	LND. 54-25	REC. 10-74
LND. 1-212		
LND. 2-106		
LND. 6-25		
LND. 9-50		
LND. 11-3		
LND. 11-36		
LND. 15-136		
LND. 16-9		
LND. 21-5		
LND. 21-83		
LND. 23-25		
LND. 23-57		
LND. 32-59		
LND. 44-115		
LND. 45-135		
LND. 45-48		
LND. 47-34		
LND. 50-192		

PREPARED BY: MIAMI COUNTY ENGINEER'S MAP DEPARTMENT  
PAUL P. HUELSKAMP, P.E., P.S., COUNTY ENGINEER  
DATE: DECEMBER 23, 2015 MB  
REVISED: SEPTEMBER 10, 2018 IG



SEE PLAT 21-A

SEE PLAT 21

PISGAH ROAD 60' R/W

STATE ROUTE 571

R.S. 39