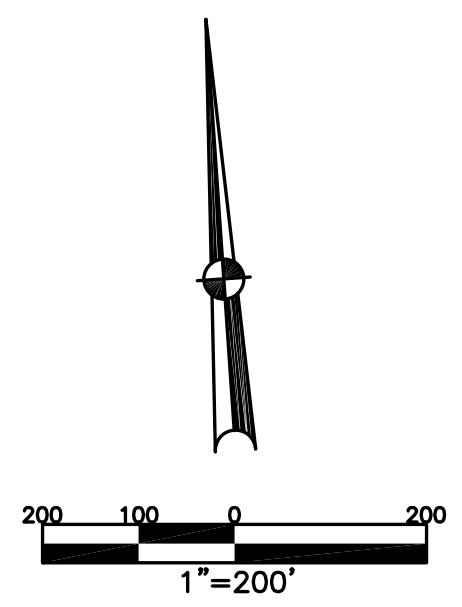


BETHEL TWP.
MIAMI COUNTY, OHIO

SECTION 17 TOWN 2 RANGE 9
SOUTHEAST QUARTER

PARCEL NUMBER
A01-_____

PLAT 21-A



ABBREVIATION LEGEND

20140R-07759 = RECORDER'S DOCUMENT NUMBER
OR 257-619 = OFFICIAL RECORD 257 PAGE 619
D.B. 613-172 = DEED BOOK 613, PAGE 172
REC. 15-72 = RECORDER'S PLAT BOOK 15, PAGE 72
LND. 33-15 = LAND SURVEY VOLUME 33, PAGE 15
LOT 19-12 = LOT SURVEY VOLUME 19, PAGE 12
R.R. 8-29 = ROAD RECORD VOLUME 8, PAGE 29
R/W = RIGHT OF WAY
C. = CENTERLINE
AC. = ACRES
TWP. = TOWNSHIP
TR. = TRACT
② = LOT CREATED BY RECORDER'S PLAT

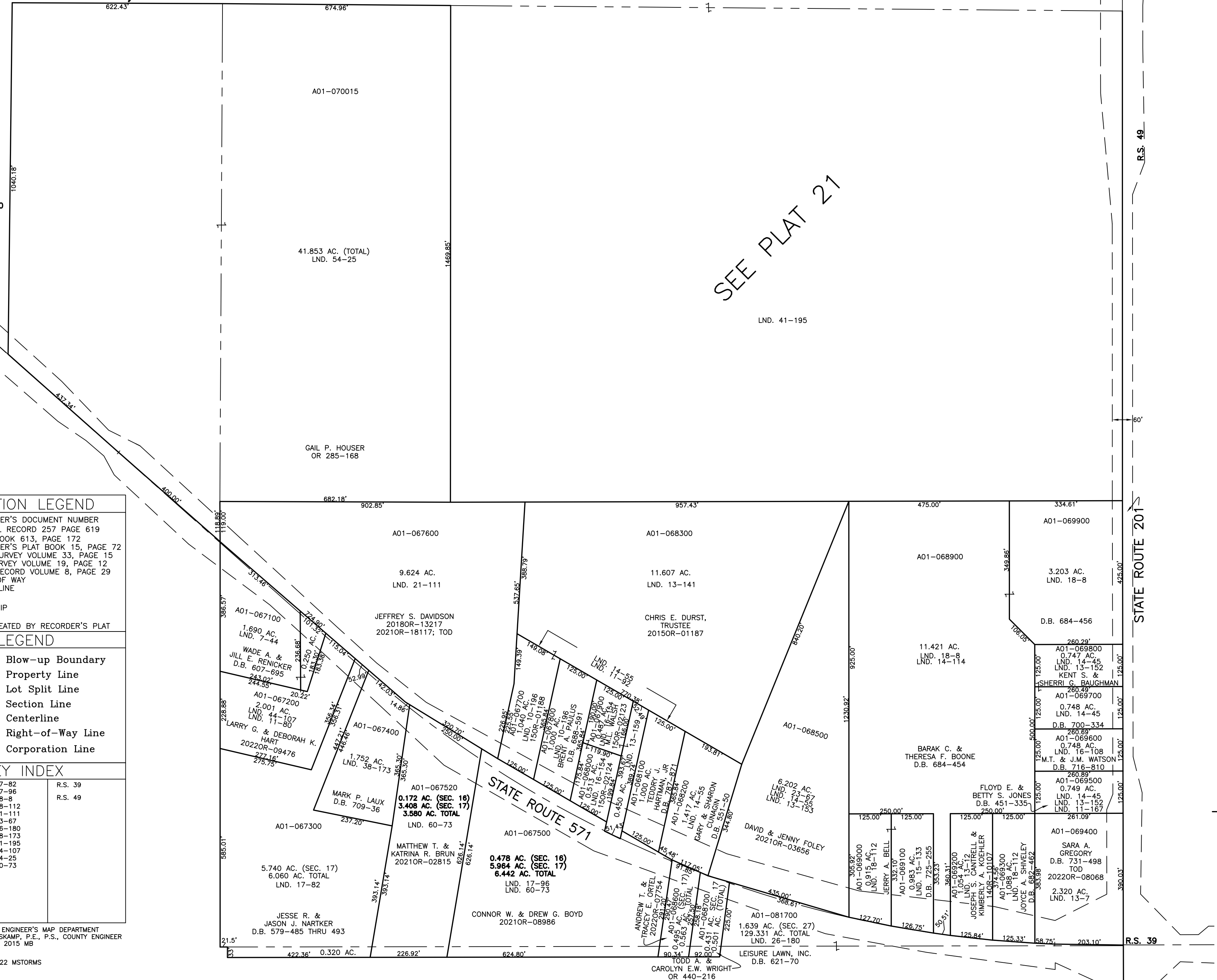
LINE LEGEND

———— Blow-up Boundary
———— Property Line
- - - - Lot Split Line
- - - - Section Line
———— Centerline
- - - - Right-of-Way Line
//// //// Corporation Line

SURVEY INDEX

LND. 1-123	LND. 17-82	R.S. 39
LND. 7-44	LND. 17-96	
LND. 10-144	LND. 18-8	R.S. 49
LND. 10-196	LND. 18-112	
LND. 11-80	LND. 21-111	
LND. 11-92	LND. 23-67	
LND. 11-167	LND. 26-180	
LND. 13-7	LND. 38-173	
LND. 13-12	LND. 41-195	
LND. 13-141	LND. 44-107	
LND. 13-152	LND. 54-25	
LND. 13-153	LND. 60-73	
LND. 13-159		
LND. 14-45		
LND. 14-55		
LND. 14-114		
LND. 15-133		
LND. 16-108		
LND. 16-154		

PREPARED BY: MIAMI COUNTY ENGINEER'S MAP DEPARTMENT
PAUL P. HUELSKAMP, P.E., P.S., COUNTY ENGINEER
DATE: DECEMBER 21, 2015 MB
REVISED: August 10, 2022 MSTORMS



SEE PLAT 21

R.S. 49

STATE ROUTE 201

R.S. 39