

BETHEL TWP.
MIAMI COUNTY, OHIO

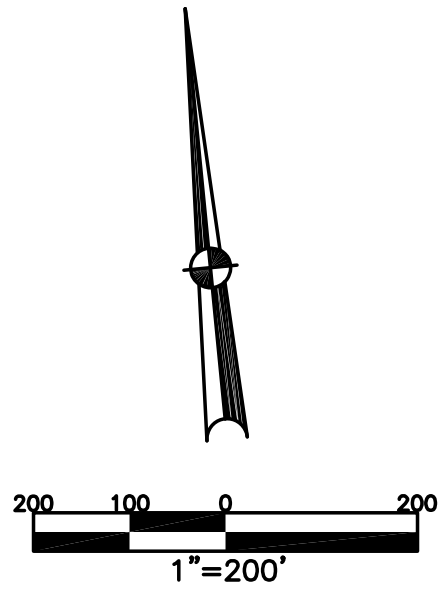
SECTION 14 TOWN 2 RANGE 9
NORTHEAST QUARTER

PARCEL NUMBER
A01-_____

PLAT 18-A

ROSS ROAD 60'

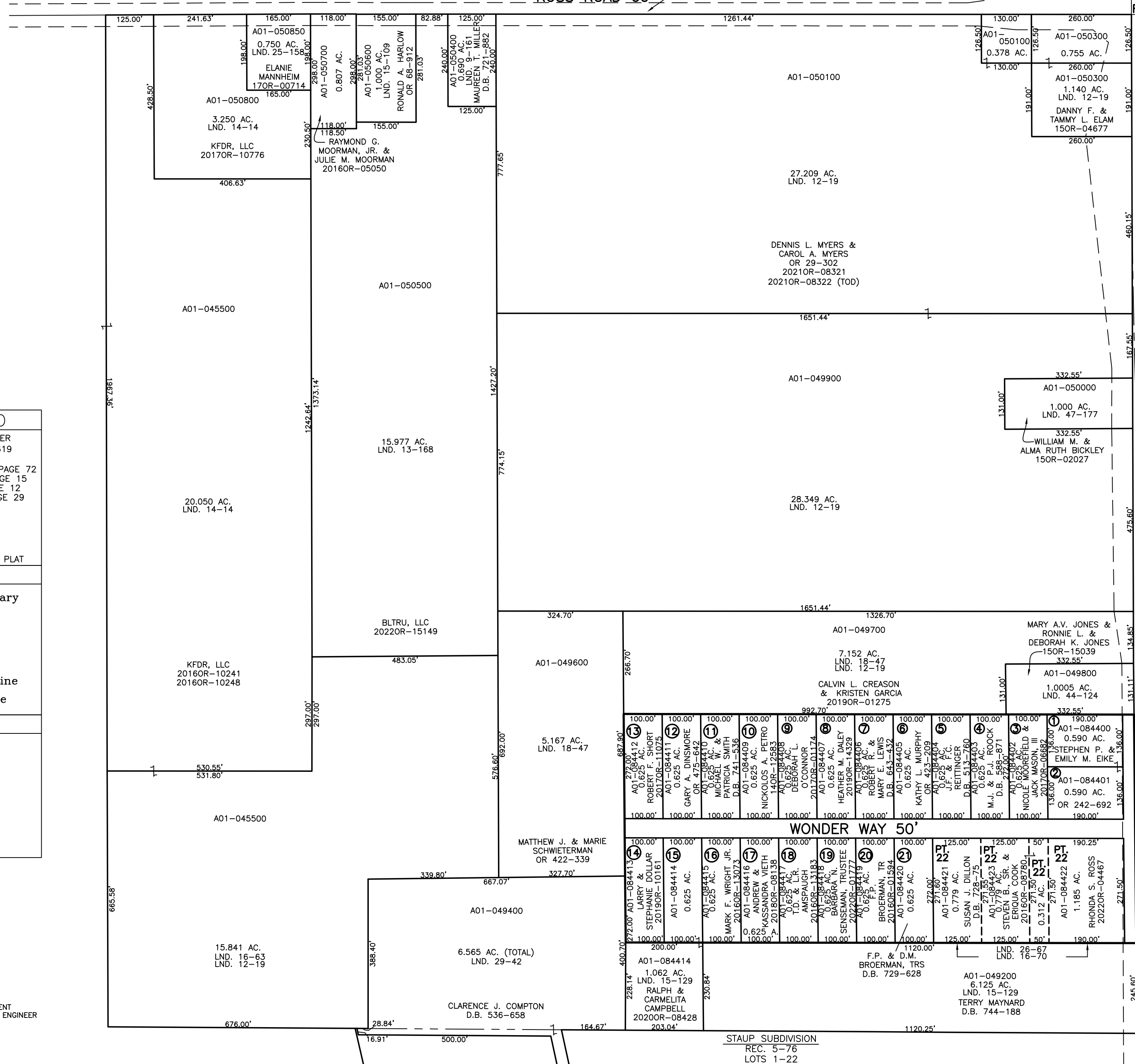
R.S. 73



ABBREVIATION LEGEND	
2014OR-07759	= RECORDER'S DOCUMENT NUMBER
OR 257-619	= OFFICIAL RECORD 257 PAGE 619
D.B. 613-172	= DEED BOOK 613, PAGE 172
REC. 15-72	= RECORDER'S PLAT BOOK 15, PAGE 72
LND. 33-15	= LAND SURVEY VOLUME 33, PAGE 15
LOT 19-12	= LOT SURVEY VOLUME 19, PAGE 12
R.R. 8-29	= ROAD RECORD VOLUME 8, PAGE 29
R/W	= RIGHT OF WAY
CL	= CENTERLINE
AC.	= ACRES
TWP.	= TOWNSHIP
TR.	= TRACT
Ⓢ	= LOT CREATED BY RECORDER'S PLAT

LINE LEGEND	
	Blow-up Boundary
	Property Line
	Lot Split Line
	Section Line
	Centerline
	Right-of-Way Line
	Corporation Line

SURVEY INDEX		
LND. 9-161	REC. 5-76	
LND. 12-19	R.S. 73	
LND. 13-168		
LND. 14-14		
LND. 15-129		
LND. 16-63		
LND. 16-70		
LND. 18-47		
LND. 25-158		
LND. 26-67		
LND. 29-42		
LND. 44-124		
LND. 47-177		



PREPARED BY: MIAMI COUNTY ENGINEER'S MAP DEPARTMENT
PAUL P. HUELSKAMP, P.E., P.S., COUNTY ENGINEER
DATE: JANUARY 25, 2016 MB

REVISED: October 24, 2022 APALMER

STAUP SUBDIVISION
REC. 5-76
LOTS 1-22