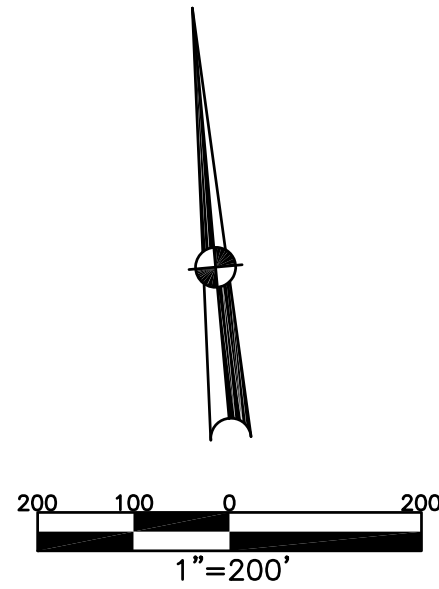


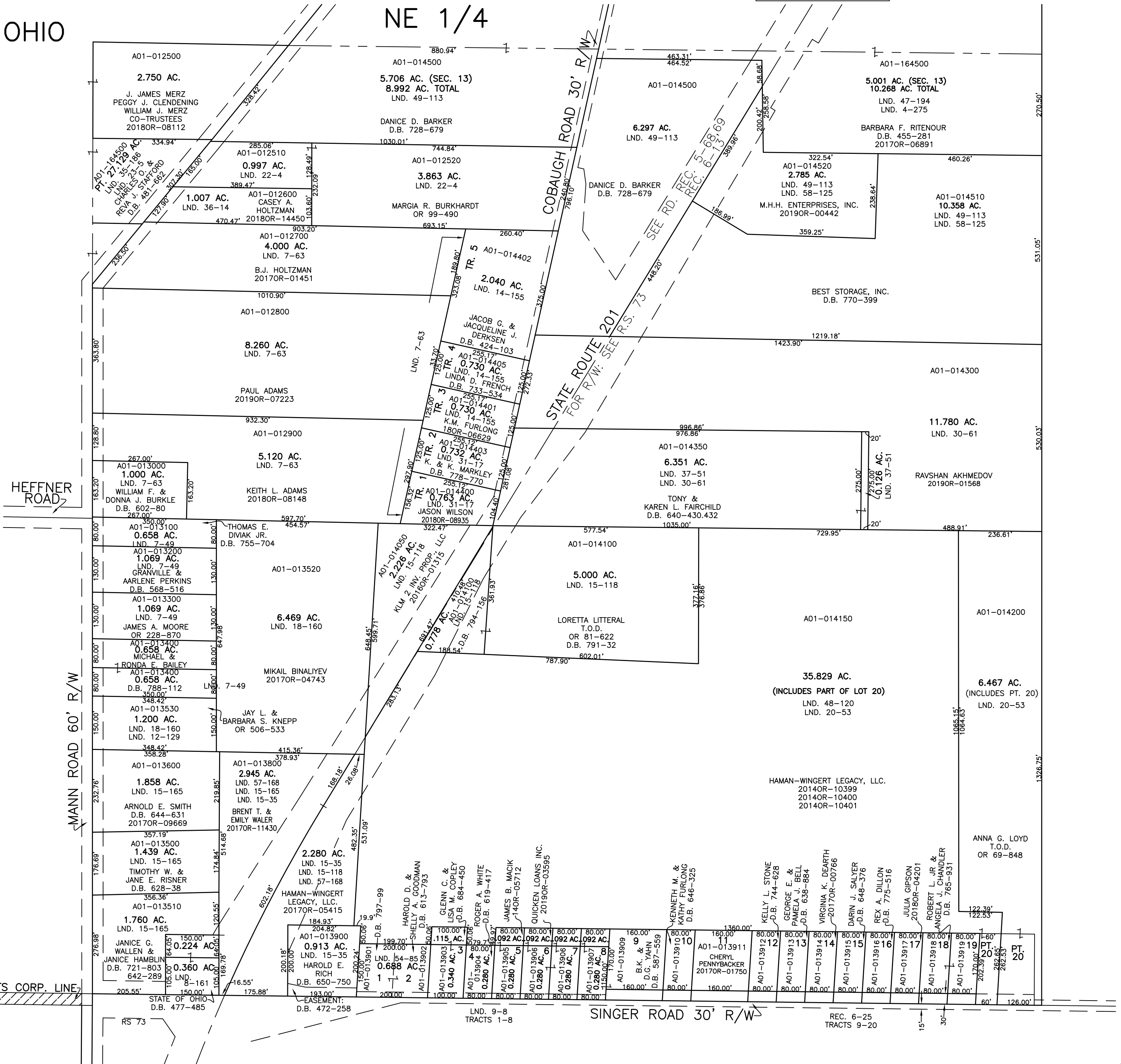
BETHEL TWP.  
MIAMI COUNTY, OHIO

SECTION 13 TOWN 2 RANGE 9  
NE 1/4

PARCEL NUMBER  
A01- PLAT 17-A



ABBREVIATION LEGEND		
20140R-07759	=	RECORDER'S DOCUMENT NUMBER
OR 257-619	=	OFFICIAL RECORD 257 PAGE 619
D.B. 613-172	=	DEED BOOK 613, PAGE 172
REC. 15-72	=	RECORDER'S PLAT BOOK 15, PAGE 72
LND. 33-15	=	LAND SURVEY VOLUME 33, PAGE 15
LOT 19-12	=	LOT SURVEY VOLUME 19, PAGE 12
R.R. 8-29	=	ROAD RECORD VOLUME 8, PAGE 29
R/W	=	RIGHT OF WAY
CL	=	CENTERLINE
AC.	=	ACRES
TWP.	=	TOWNSHIP
TR.	=	TRACT
Ⓢ	=	LOT CREATED BY RECORDER'S PLAT
LINE LEGEND		
	=	Blow-up Boundary
	=	Property Line
	=	Lot Split Line
	=	Section Line
	=	Centerline
	=	Right-of-Way Line
	=	Corporation Line
SURVEY INDEX		
LND. 4-251	LND. 35-186	REC. 6-25
LND. 4-275	LND. 36-14	RD. REC. 5-68
LND. 7-49	LND. 37-51	RD. REC. 5-69
LND. 7-53	LND. 47-194	RD. REC. 6-13
LND. 7-63	LND. 48-120	
LND. 8-161	LND. 49-113	RS 73
LND. 9-7	LND. 54-85	
LND. 9-8	LND. 57-168	
LND. 12-129	LND. 58-125	
LND. 14-155		
LND. 15-35		
LND. 15-118		
LND. 15-165		
LND. 18-160		
LND. 20-53		
LND. 22-4		
LND. 23-5		
LND. 30-61		
LND. 31-17		



PREPARED BY: MIAMI COUNTY ENGINEER'S MAP DEPARTMENT  
PAUL P. HUELSKAMP, P.E., P.S., COUNTY ENGINEER  
DATE: OCTOBER 20, 2015 MB  
REVISED: July 3, 2019 DSTUMPF