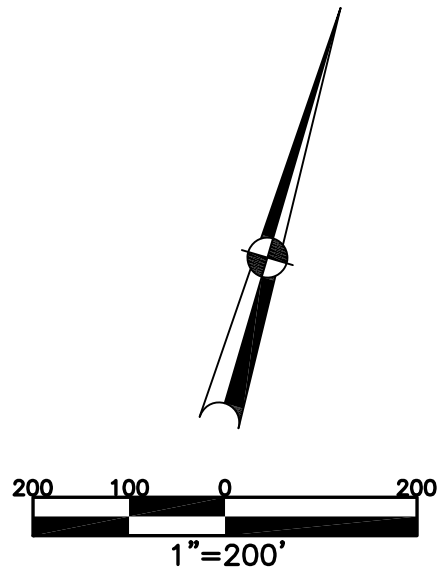


BETHEL TWP.
MIAMI COUNTY, OHIO

SECTION 11 TOWN 2 RANGE 9
NE QUARTER

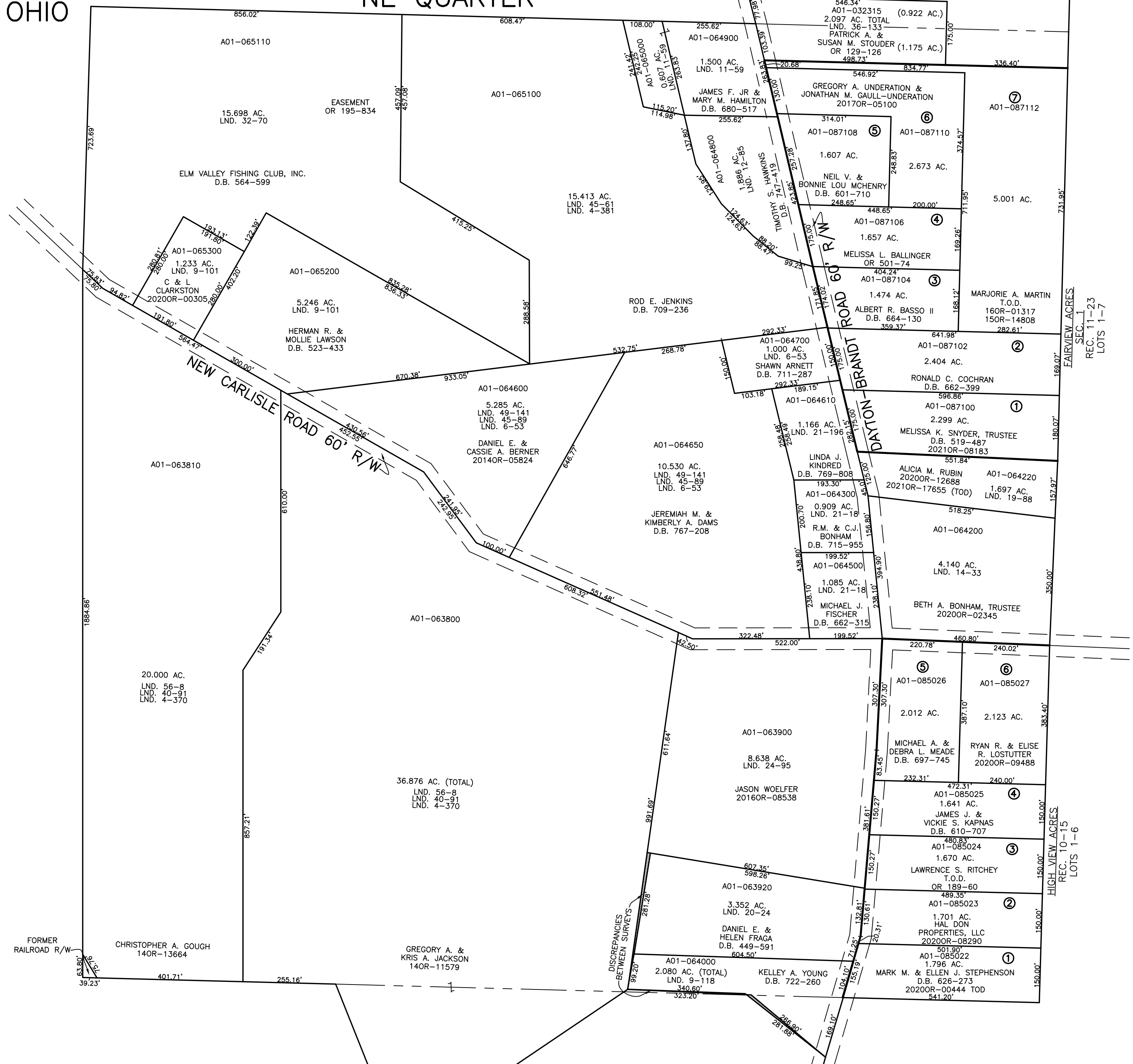
PARCEL NUMBER
A01-
PLAT 15-A



ABBREVIATION LEGEND		
20140R-07759	=	RECORDER'S DOCUMENT NUMBER
OR 257-619	=	OFFICIAL RECORD 257 PAGE 619
D.B. 613-172	=	DEED BOOK 613, PAGE 172
REC. 15-72	=	RECORDER'S PLAT BOOK 15, PAGE 72
LND. 33-15	=	LAND SURVEY VOLUME 33, PAGE 15
LOT 19-12	=	LOT SURVEY VOLUME 19, PAGE 12
R.R. 8-29	=	ROAD RECORD VOLUME 8, PAGE 29
R/W	=	RIGHT OF WAY
C	=	CENTERLINE
AC.	=	ACRES
TWP.	=	TOWNSHIP
TR.	=	TRACT
②	=	LOT CREATED BY RECORDER'S PLAT

LINE LEGEND		
	=	Blow-up Boundary
	=	Property Line
	=	Lot Split Line
	=	Section Line
	=	Centerline
	=	Right-of-Way Line
	=	Corporation Line

SURVEY INDEX		
LND. 4-370	LND. 20-55	REC. 10-15
LND. 4-381	LND. 20-53	REC. 11-23
LND. 6-53	LND. 21-18	
LND. 8-114	LND. 21-196	
LND. 9-101	LND. 24-95	
LND. 9-118	LND. 32-70	
LND. 11-32	LND. 36-133	
LND. 11-59	LND. 40-91	
LND. 12-85	LND. 45-61	
LND. 14-33	LND. 45-89	
LND. 19-88	LND. 47-38	
LND. 19-194	LND. 49-141	
LND. 20-24	LND. 56-8	



PREPARED BY: MIAMI COUNTY ENGINEER'S MAP DEPARTMENT
PAUL P. HUELSKAMP, P.E., P.S., COUNTY ENGINEER
DATE: MARCH 7, 2016 MB
REVISED: October 13, 2021 APALMER