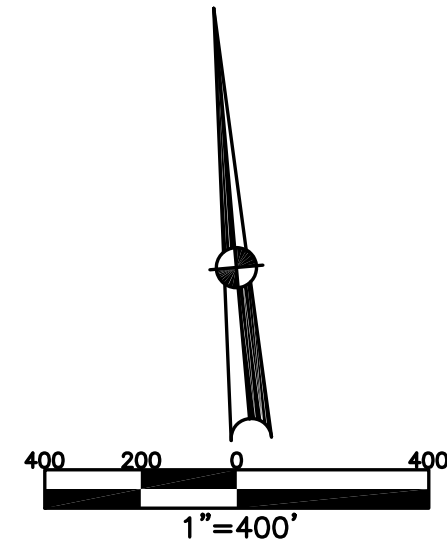


TOWNSHIP OF BETHEL
MIAMI COUNTY, OHIO

SECTION 11 TOWN 2 RANGE 9

PLAT 15

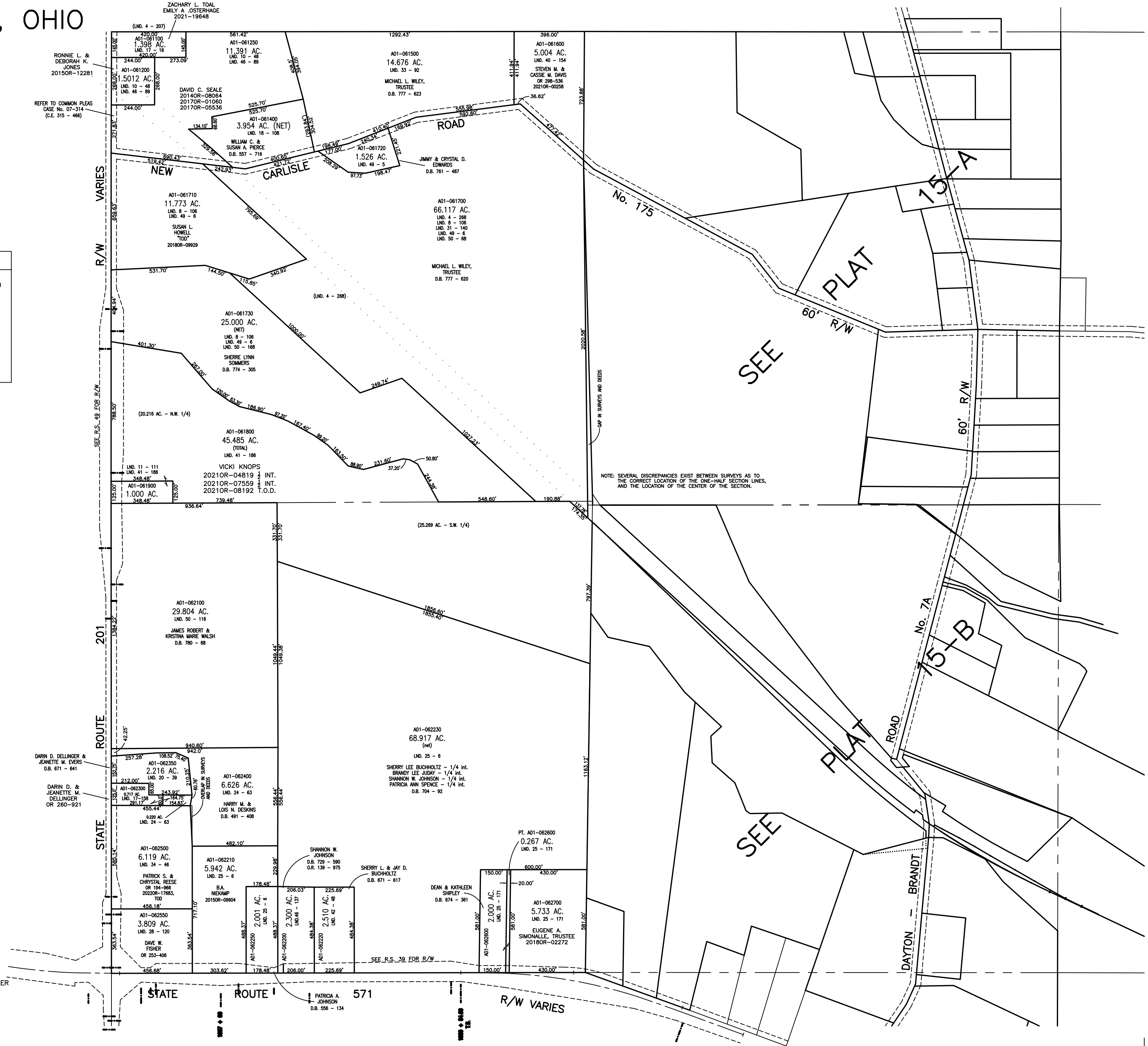


ABBREVIATION LEGEND

D.B. 613-172	= DEED BOOK 613, PAGE 172
O.R. 35-500	= OFFICIAL RECORDS VOL. 35, PAGE 500
REC. 15-72	= RECORDER'S PLAT BOOK 15, PAGE 72
LND. 33-15	= LAND SURVEY VOLUME 33, PAGE 15
LOT 19-12	= LOT SURVEY VOLUME 19, PAGE 12
R.R. 8-29	= ROAD RECORD VOLUME 8, PAGE 29
R/W	= RIGHT OF WAY
CL	= CENTERLINE
AC.	= ACRES
TWP.	= TOWNSHIP
TR.	= TRACT
Ⓢ	= LOT CREATED BY RECORDER'S PLAT

SURVEY INDEX

NORTHWEST QUARTER	
LND. 4 - 207	
LND. 4 - 268	
LND. 8 - 108	
LND. 10 - 48	
LND. 11 - 111	
LND. 17 - 16	
LND. 18 - 108	
LND. 31 - 140	
LND. 32 - 7	
LND. 33 - 92	
LND. 40 - 154	
LND. 41 - 186	
LND. 46 - 89	
LND. 49 - 6	
LND. 50 - 68	
	R.S. 49
SOUTHWEST QUARTER	
LND. 17 - 158	
LND. 20 - 39	
LND. 24 - 63	
LND. 25 - 6	
LND. 25 - 171	
LND. 28 - 120	
LND. 34 - 46	
LND. 41 - 186	
LND. 42 - 48	
LND. 46 - 137	
LND. 49 - 6	
LND. 50 - 116	
	R.S. 39
	R.S. 49



PREPARED BY: MIAMI COUNTY ENGINEER'S MAP DEPARTMENT
PAUL P. HUELSKAMP, P.E., P.S., COUNTY ENGINEER
DATE: NOVEMBER 4, 2010
REVISED: December 19, 2022 JVINCENT

571
PATRICIA A. JOHNSON
D.B. 556 - 134