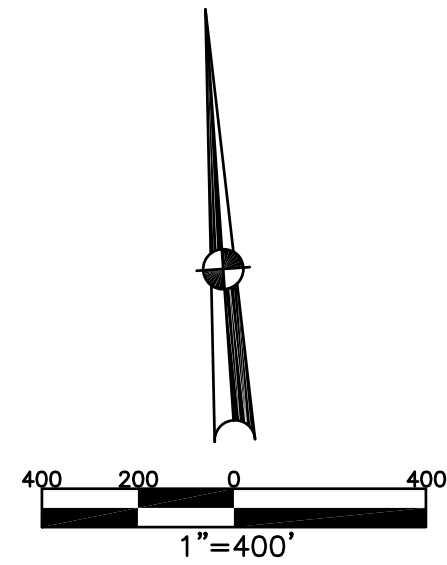


BETHEL TWP.  
MIAMI COUNTY, OHIO

SECTION 10 TOWN 2 RANGE 9

PARCEL NUMBER  
AO1 -

PLAT 14



ABBREVIATION LEGEND		
2014OR-07759 =	RECORDER'S DOCUMENT NUMBER	
OR 257-619 =	OFFICIAL RECORD 257 PAGE 619	
D.B. 613-172 =	DEED BOOK 613, PAGE 172	
REC. 15-72 =	RECORDER'S PLAT BOOK 15, PAGE 72	
LND. 33-15 =	LAND SURVEY VOLUME 33, PAGE 15	
LOT 19-12 =	LOT SURVEY VOLUME 19, PAGE 12	
R.R. 8-29 =	ROAD RECORD VOLUME 8, PAGE 29	
R/W	RIGHT OF WAY	
C	CENTERLINE	
AC.	ACRES	
TWP.	TOWNSHIP	
TR.	TRACT	
Ⓢ	LOT CREATED BY RECORDER'S PLAT	

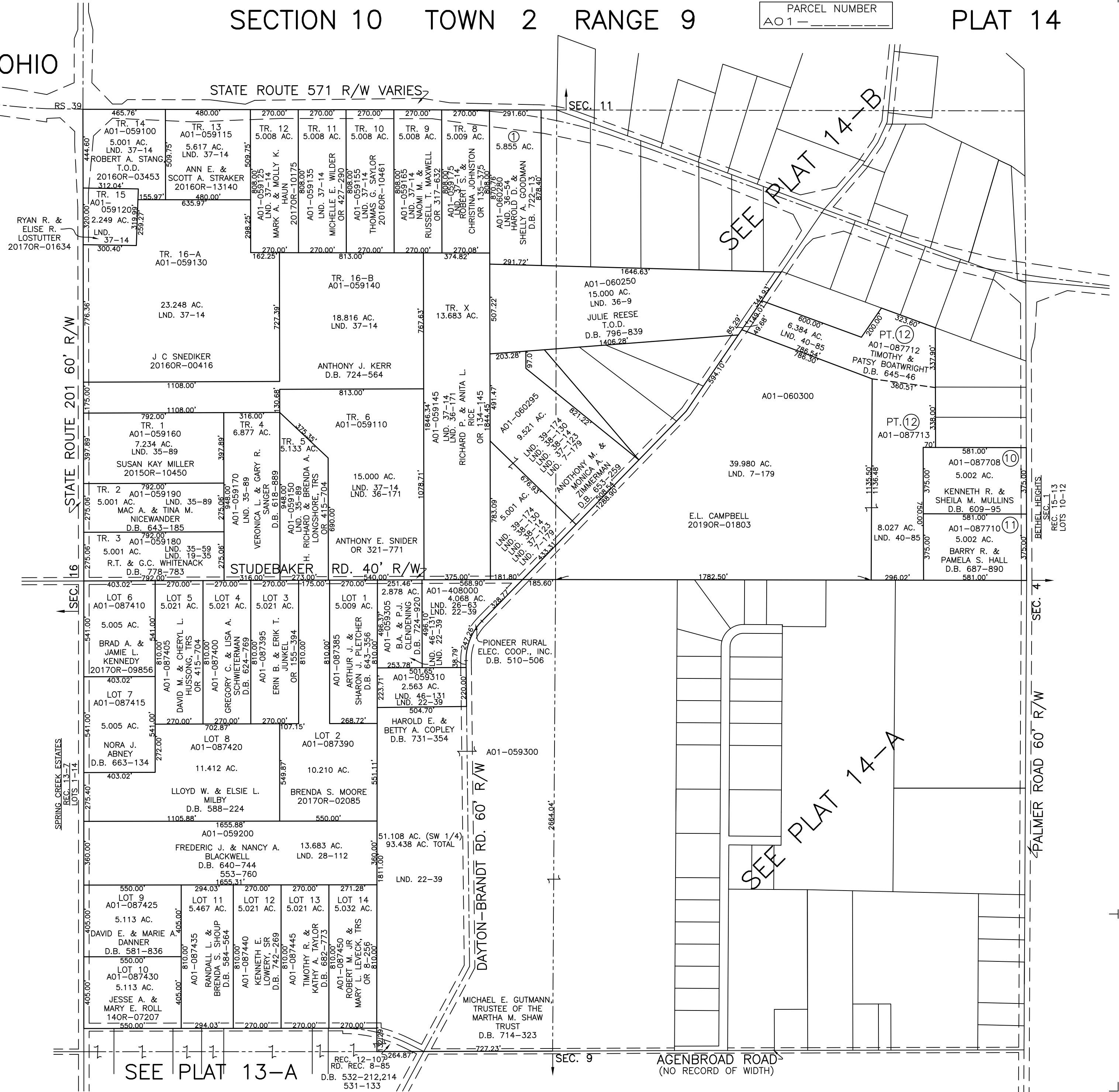
  

LINE LEGEND	
	Blow-up Boundary
	Property Line
	Lot Split Line
	Section Line
	Centerline
	Right-of-Way Line
	Corporation Line

SURVEY INDEX		
NORTHEAST QUARTER		
LND. 2-89	LND. 39-174	REC. 15-13
LND. 2-183	LND. 40-85	
LND. 7-179		
LND. 36-9		
LND. 36-54		
LND. 37-123		
LND. 38-14		
LND. 38-130		
SOUTHEAST QUARTER		
SOUTHWEST QUARTER		
LND. 2-153	LND. 33-65	REC. 12-107
LND. 2-154	LND. 46-131	REC. 13-7
LND. 3-248	LND. 49-126	REC. 26-52
LND. 19-10	LND. 52-134	
LND. 22-39	LND. 52-148	RD. REC. 8-85
LND. 26-63	LND. 57-141	
LND. 27-73		
LND. 28-112		
NORTHWEST QUARTER		
LND. 3-353	LND. 38-14	RS 39
LND. 7-179	LND. 38-130	
LND. 19-35	LND. 39-174	
LND. 36-9		
LND. 36-54		
LND. 36-171		
LND. 37-14		
LND. 37-123		

PREPARED BY: MIAMI COUNTY ENGINEER'S MAP DEPARTMENT  
PAUL P. HUELSKAMP, P.E., P.S., COUNTY ENGINEER  
DATE: JULY 29, 2015 MB  
REVISED: FEBRUARY 21, 2019 DV



SEE PLAT 13-A

AGENBROAD ROAD  
(NO RECORD OF WIDTH)