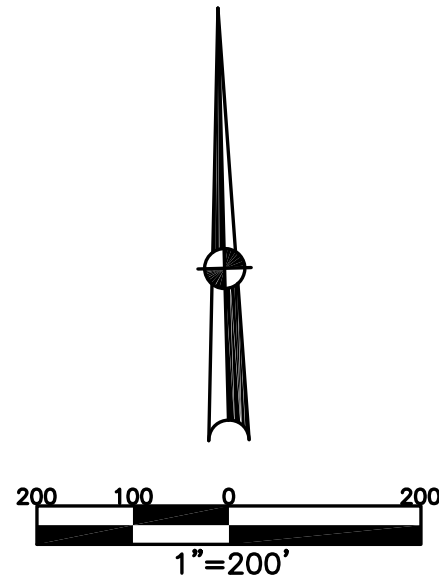


BETHEL TWP.
MIAMI COUNTY, OHIO

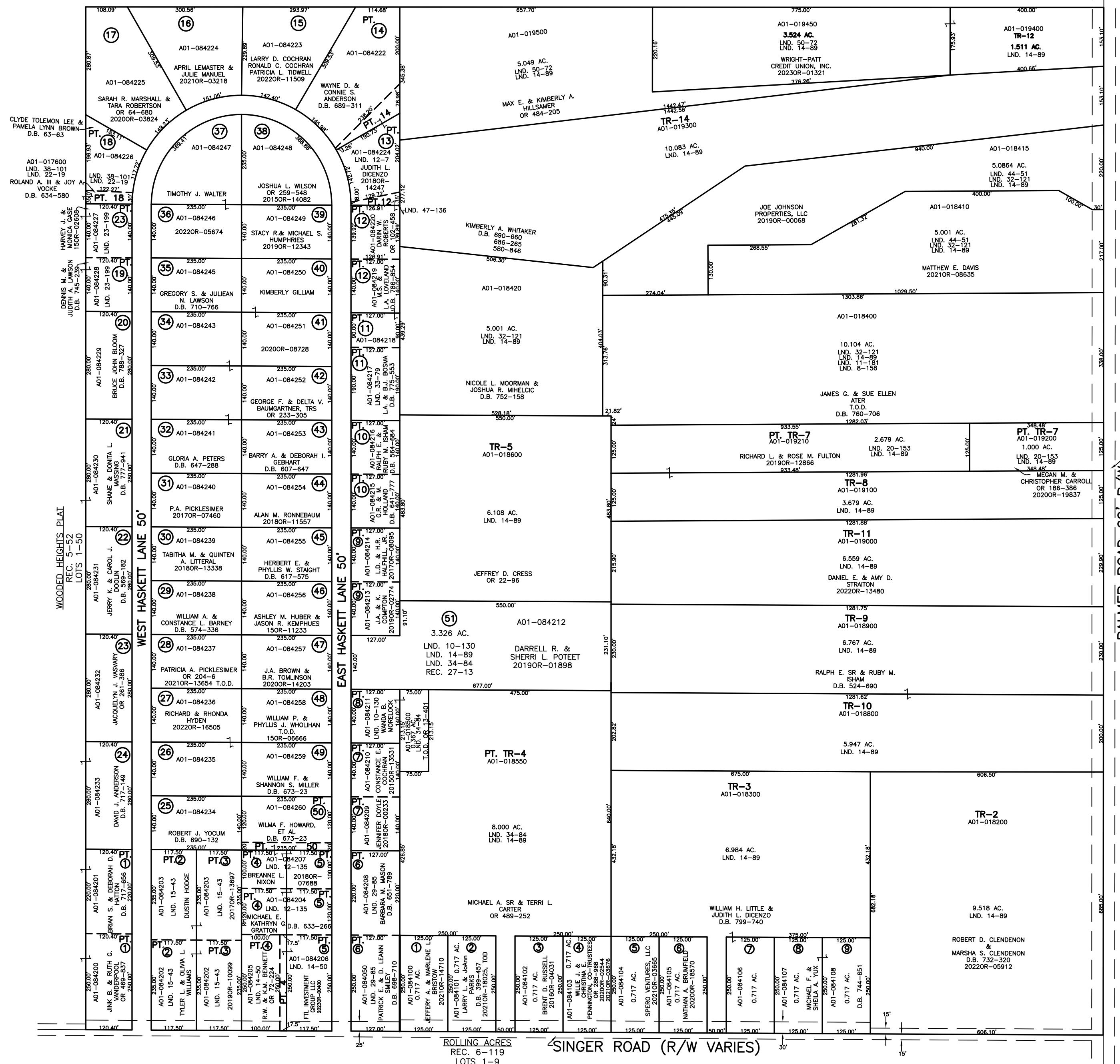
SECTION 7 TOWN 2 RANGE 9
NORTHEAST QUARTER

PARCEL NUMBER
A01-00000

PLAT 11-A



ABBREVIATION LEGEND		
20140R-07759	=	RECORDER'S DOCUMENT NUMBER
OR 257-619	=	OFFICIAL RECORD 257 PAGE 619
D.B. 613-172	=	DEED BOOK 613, PAGE 172
REC. 15-72	=	RECORDER'S PLAT BOOK 15, PAGE 72
LND. 33-15	=	LAND SURVEY VOLUME 33, PAGE 15
LOT 19-12	=	LOT SURVEY VOLUME 19, PAGE 12
R.R. 8-29	=	ROAD RECORD VOLUME 8, PAGE 29
R/W	=	RIGHT OF WAY
CL	=	CENTERLINE
AC.	=	ACRES
TWP.	=	TOWNSHIP
TR.	=	TRACT
Ⓢ	=	LOT CREATED BY RECORDER'S PLAT
LINE LEGEND		
	=	Blow-up Boundary
	=	Property Line
	=	Lot Split Line
	=	Section Line
	=	Centerline
	=	Right-of-Way Line
	=	Corporation Line
SURVEY INDEX		
LND. 8-158	LND. 32-121	REC. 5-52
LND. 8-198	LND. 33-79	REC. 6-119
LND. 10-130	LND. 34-84	REC. 27-13
LND. 11-181	LND. 38-101	
LND. 12-7	LND. 44-51	
LND. 12-135	LND. 47-136	
LND. 13-14	LND. 50-72	
LND. 14-50		
LND. 14-89		
LND. 15-43		
LND. 20-153		
LND. 22-19		
LND. 23-199		
LND. 29-85		



PREPARED BY: MIAMI COUNTY ENGINEER'S MAP DEPARTMENT
PAUL P. HUELSKAMP, P.E., P.S., COUNTY ENGINEER
DATE: JUNE 18, 2015 MB
REVISED: February 8, 2023 MSTORMS