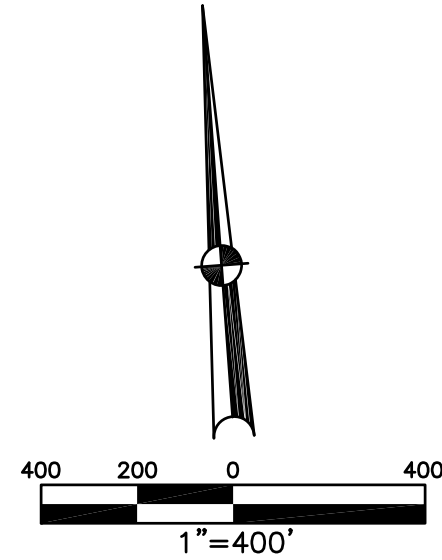


BETHEL TWP.
MIAMI COUNTY, OHIO

SECTION 6 TOWN 2 RANGE 9

PARCEL NUMBER
A01 -

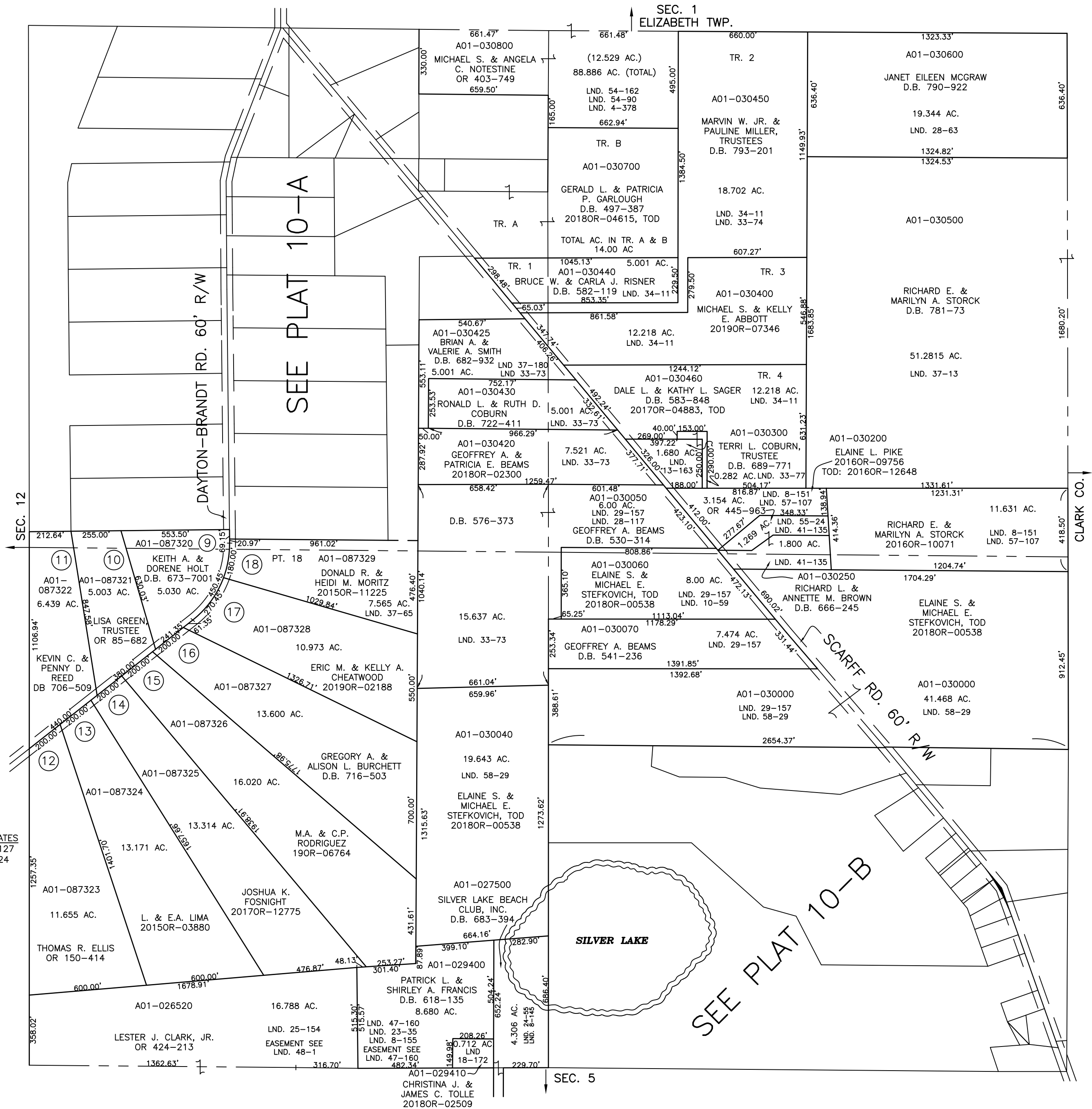
PLAT 10



ABBREVIATION LEGEND		
20140R-07759	=	RECORDER'S DOCUMENT NUMBER
OR 257-619	=	OFFICIAL RECORD 257 PAGE 619
D.B. 613-172	=	DEED BOOK 613, PAGE 172
REC. 15-72	=	RECORDER'S PLAT BOOK 15, PAGE 72
LND. 33-15	=	LAND SURVEY VOLUME 33, PAGE 15
LOT 19-12	=	LOT SURVEY VOLUME 19, PAGE 12
R.R. 8-29	=	ROAD RECORD VOLUME 8, PAGE 29
R/W	=	RIGHT OF WAY
C	=	CENTERLINE
AC.	=	ACRES
TWP.	=	TOWNSHIP
TR.	=	TRACT
②	=	LOT CREATED BY RECORDER'S PLAT

LINE LEGEND	
	Blow-up Boundary
	Property Line
	Lot Split Line
	Section Line
	Centerline
	Right-of-Way Line
	Corporation Line

SURVEY INDEX		
NORTHEAST QUARTER		
LND. 8-151	LND. 41-135	LND. 28-117
LND. 13-163	LND. 54-90	LND. 29-157
LND. 28-63	LND. 54-162	
LND. 33-73	LND. 55-24	
LND. 33-74	LND. 57-107	
LND. 33-77		
LND. 34-11		
LND. 37-13		
SOUTHEAST QUARTER		
LND. 7-10	LND. 32-189	LND. 58-29
LND. 7-148	LND. 33-143	LND. 28-117
LND. 8-151	LND. 34-136	LND. 29-157
LND. 10-59	LND. 41-135	
LND. 10-120	LND. 42-64	
LND. 24-141	LND. 45-127	
LND. 28-114	LND. 55-178	
LND. 32-116	LND. 57-107	
SOUTHWEST QUARTER		
LND. 8-145	LND. 48-1	REC. 12-127
LND. 8-155	LND. 58-29	
LND. 18-72		
LND. 23-35		
LND. 24-55		
LND. 25-154		
LND. 33-73		
LND. 47-160		
NORTHWEST QUARTER		
LND. 4-374	LND. 23-103	LND. 37-65
LND. 4-378	LND. 25-84	LND. 54-90
LND. 11-161	LND. 29-15	LND. 54-162
LND. 12-200	LND. 29-54	
LND. 13-39	LND. 33-73	
LND. 18-106	LND. 33-74	
LND. 19-159	LND. 34-11	
LND. 20-74	LND. 35-85	



PREPARED BY: MIAMI COUNTY ENGINEER'S MAP DEPARTMENT
PAUL F. HUELSKAMP, P.E., P.S., COUNTY ENGINEER
DATE: JULY 30, 2014 MB
REVISED: July 8, 2019 MBROMLEY