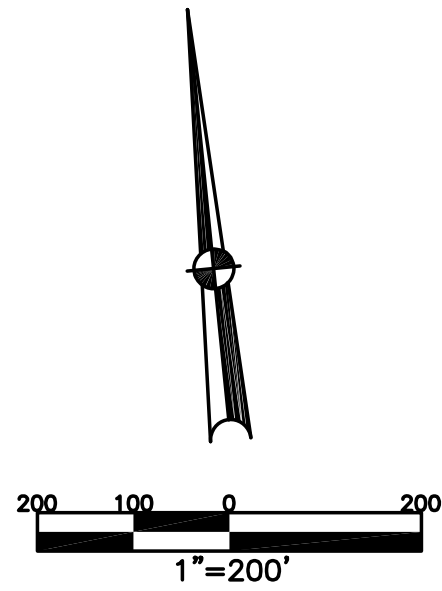


BETHEL TWP.
MIAMI COUNTY, OHIO

SECTION 5 TOWN 2 RANGE 9
NW QUARTER

PARCEL NUMBER
A01-

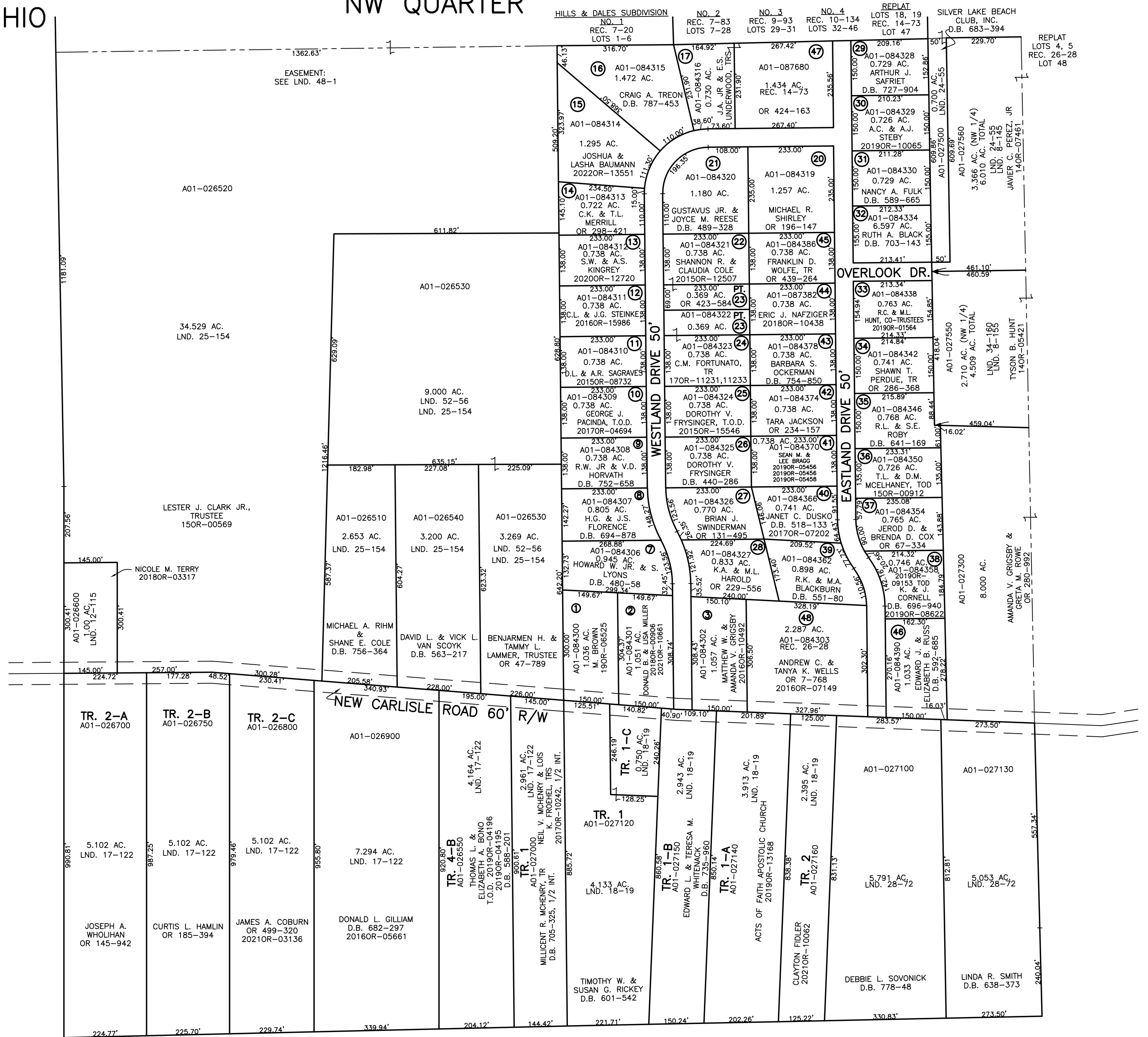
PLAT 8-A



ABBREVIATION LEGEND	
20140R-07759	= RECORDER'S DOCUMENT NUMBER
OR 257-619	= OFFICIAL RECORD 257 PAGE 619
D.B. 613-172	= DEED BOOK 613, PAGE 172
REC. 15-72	= RECORDER'S PLAT BOOK 15, PAGE 72
LND. 33-15	= LAND SURVEY VOLUME 33, PAGE 15
LOT 19-12	= LOT SURVEY VOLUME 19, PAGE 12
R.R. 8-29	= ROAD RECORD VOLUME 8, PAGE 29
R/W	= RIGHT OF WAY
C	= CENTERLINE
AC.	= ACRES
TWP.	= TOWNSHIP
TR.	= TRACT
②	= LOT CREATED BY RECORDER'S PLAT

LINE LEGEND	
	Blow-up Boundary
	Property Line
	Lot Split Line
	Section Line
	Centerline
	Right-of-Way Line
	Corporation Line

SURVEY INDEX		
LND. 8-145	REC. 7-20	
LND. 8-155	REC. 7-83	
LND. 12-115	REC. 9-93	
LND. 17-122	REC. 10-134	
LND. 18-19	REC. 14-73	
LND. 21-100	REC. 26-28	
LND. 24-55		
LND. 25-154		
LND. 28-72		
LND. 34-160		
LND. 48-1		
LND. 52-56		



PREPARED BY: MIAMI COUNTY ENGINEER'S MAP DEPARTMENT
PAUL P. HUELSKAMP, P.E., P.S., COUNTY ENGINEER
DATE: JULY 17, 2015 MB

REVISED: September 15, 2022 APALMER