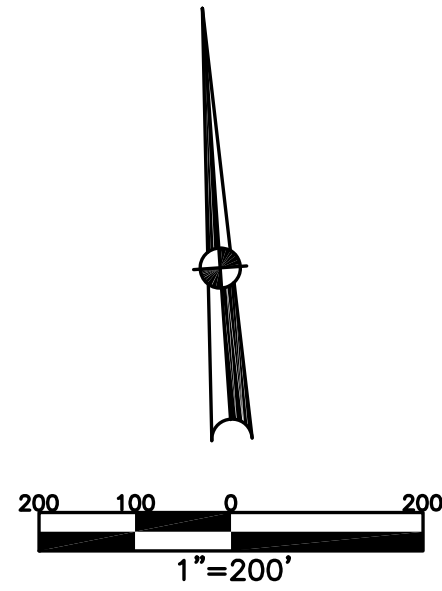


BETHEL TWP.
MIAMI COUNTY, OHIO

SECTION 4 TOWN 2 RANGE 9
NW 1/4

PARCEL NUMBER
A01-_____

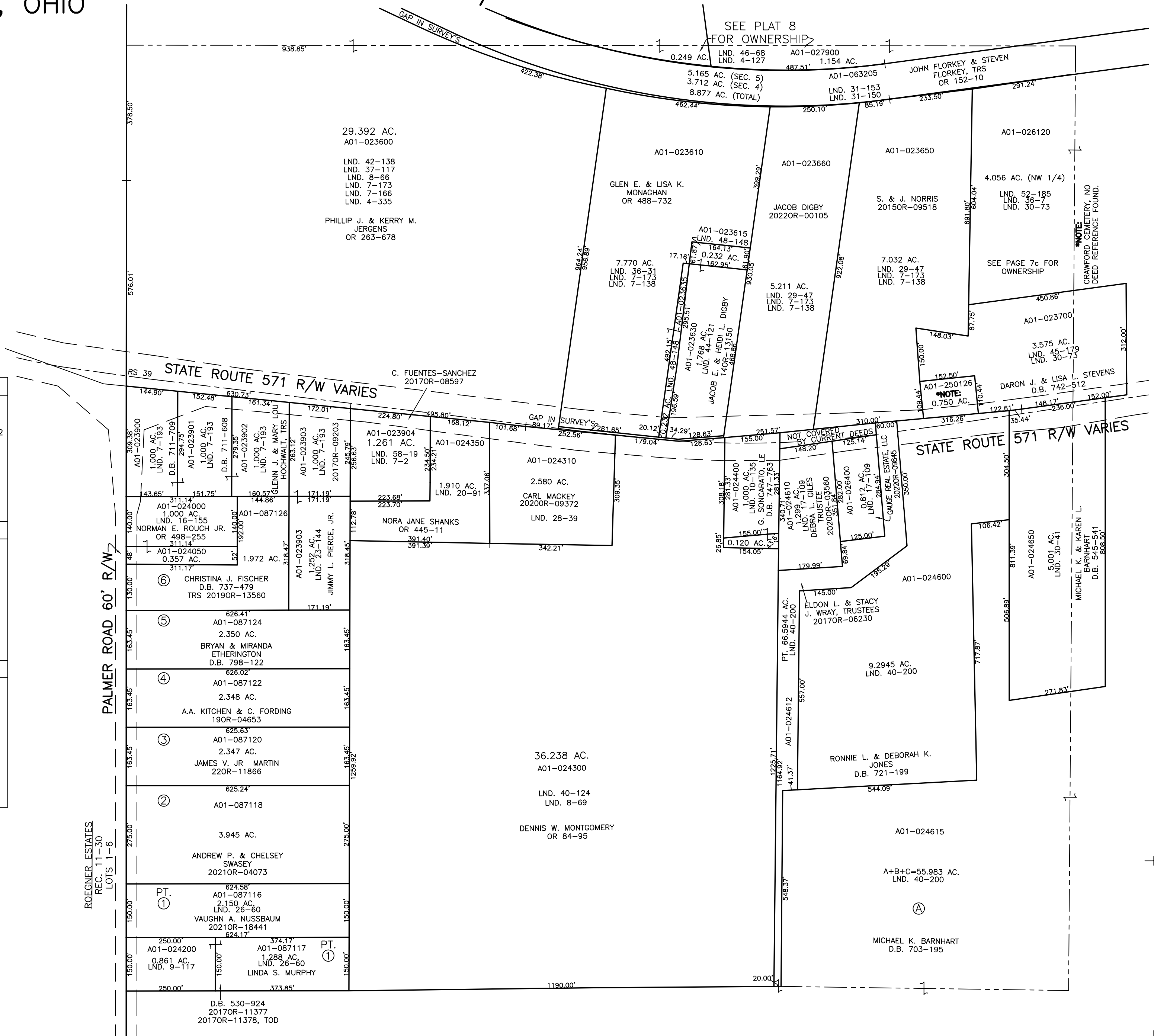
PLAT 7-A



ABBREVIATION LEGEND		
2014OR-07759	=	RECORDER'S DOCUMENT NUMBER
OR 257-619	=	OFFICIAL RECORD 257 PAGE 619
D.B. 613-172	=	DEED BOOK 613, PAGE 172
REC. 15-72	=	RECORDER'S PLAT BOOK 15, PAGE 72
LND. 33-15	=	LAND SURVEY VOLUME 33, PAGE 15
LOT 19-12	=	LOT SURVEY VOLUME 19, PAGE 12
R.R. 8-29	=	ROAD RECORD VOLUME 8, PAGE 29
R/W	=	RIGHT OF WAY
C	=	CENTERLINE
AC.	=	ACRES
TWP.	=	TOWNSHIP
TR.	=	TRACT
②	=	LOT CREATED BY RECORDER'S PLAT

LINE LEGEND	
	Blow-up Boundary
	Property Line
	Lot Split Line
	Section Line
	Centerline
	Right-of-Way Line
	Corporation Line

SURVEY INDEX		
LND. 2-87	LND. 17-109	LND. 40-124
LND. 2-183	LND. 20-91	LND. 40-200
LND. 4-127	LND. 23-144	LND. 42-138
LND. 4-335	LND. 26-60	LND. 44-121
LND. 7-2	LND. 28-14	LND. 45-179
LND. 7-138	LND. 29-47	LND. 46-68
LND. 7-166	LND. 30-41	LND. 48-148
LND. 7-173	LND. 30-73	LND. 52-185
LND. 7-193	LND. 31-150	LND. 58-19
LND. 8-66	LND. 31-153	
LND. 8-69	LND. 36-7	
LND. 9-177	LND. 36-31	
LND. 10-135	LND. 37-117	REC. 11-30
LND. 16-155	LND. 37-137	RS 39



PREPARED BY: MIAMI COUNTY ENGINEER'S MAP DEPARTMENT
PAUL P. HUELSKAMP, P.E., P.S., COUNTY ENGINEER
DATE: JULY 7, 2015 MB
REVISED: June 27, 2022 JVINCENT