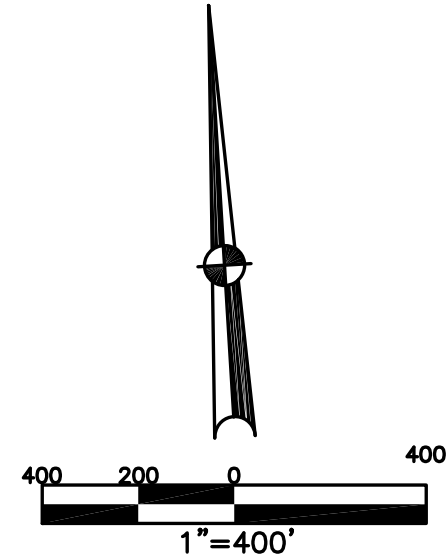


BETHEL TWP.  
MIAMI COUNTY, OHIO

SECTION 3 TOWN 2 RANGE 9

PARCEL NUMBER  
A01-01-  
A03-01-

PLAT 6



ABBREVIATION LEGEND	
20140R-07759	= RECORDER'S DOCUMENT NUMBER
OR 257-619	= OFFICIAL RECORD 257 PAGE 619
D.B. 613-172	= DEED BOOK 613, PAGE 172
REC. 15-72	= RECORDER'S PLAT BOOK 15, PAGE 72
LND. 33-15	= LAND SURVEY VOLUME 33, PAGE 15
LOT 19-12	= LOT SURVEY VOLUME 19, PAGE 12
R.R. 8-29	= ROAD RECORD VOLUME 8, PAGE 29
R/W	= RIGHT OF WAY
C	= CENTERLINE
AC.	= ACRES
TWP.	= TOWNSHIP
TR.	= TRACT
②	= LOT CREATED BY RECORDER'S PLAT

LINE LEGEND	
	Blow-up Boundary
	Property Line
	Lot Split Line
	Section Line
	Centerline
	Right-of-Way Line
	Corporation Line

SURVEY INDEX	
NORTHEAST QUARTER	
LND. 24-21	REC. 11-44
LND. 25-130	REC. 11-45
LND. 26-109	
LND. 26-198	
LND. 27-147	

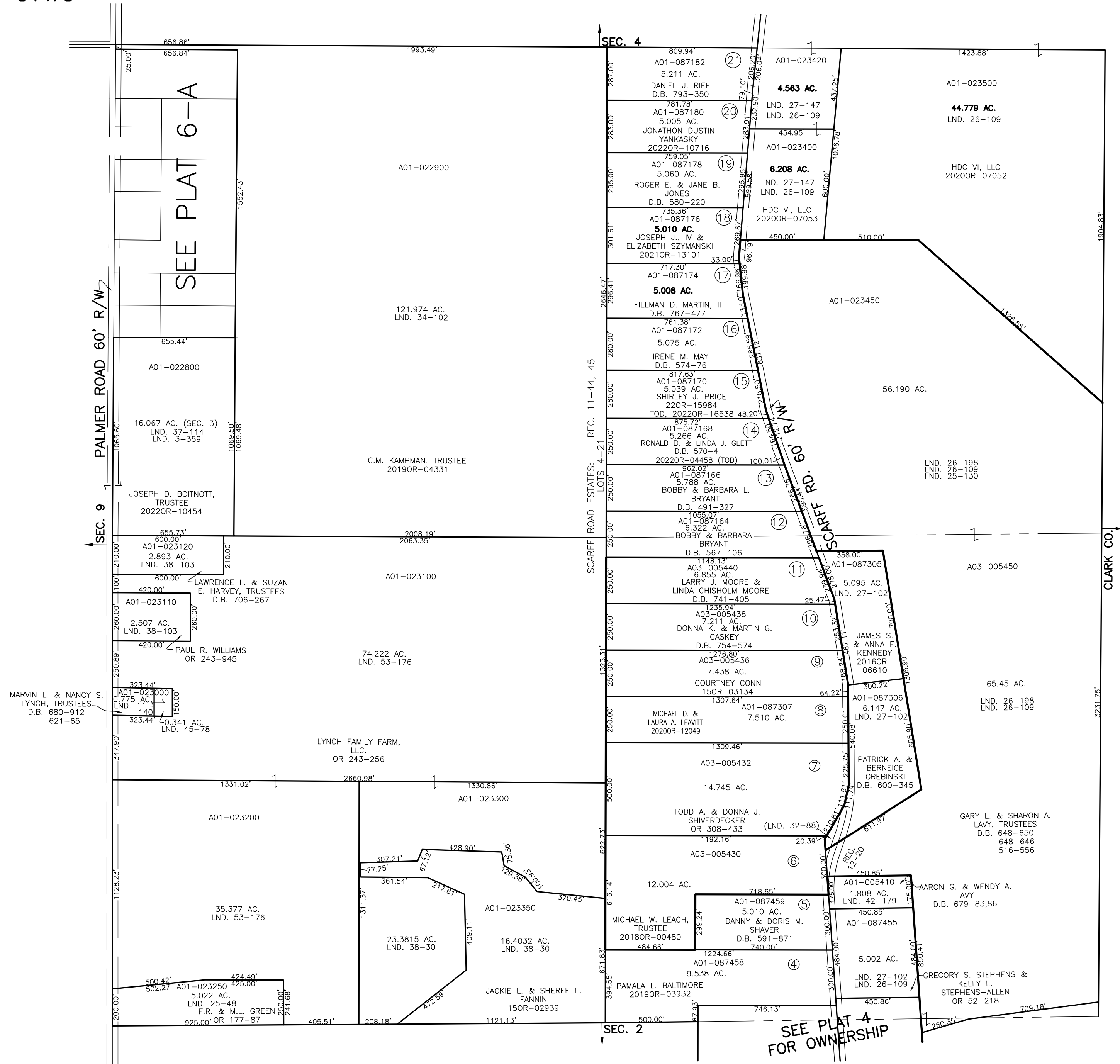
SOUTHEAST QUARTER	
LND. 26-100	REC. 11-44
LND. 26-109	REC. 11-45
LND. 26-198	
LND. 27-102	
LND. 32-88	
LND. 42-179	

SOUTHWEST QUARTER	
LND. 11-140	
LND. 25-48	
LND. 38-30	
LND. 38-103	
LND. 45-78	
LND. 53-176	

NORTHWEST QUARTER	
LND. 3-359	LND. 31-51
LND. 17-42	LND. 34-102
LND. 17-76	LND. 37-114
LND. 17-91	LND. 38-113
LND. 17-105	
LND. 17-136	
LND. 18-177	
LND. 19-57	



PREPARED BY: MIAMI COUNTY ENGINEER'S MAP DEPARTMENT  
PAUL P. HUELSKAMP, P.E., P.S., COUNTY ENGINEER  
DATE: JUNE 15, 2015 MB  
REVISED: November 18, 2022 JZWEZ