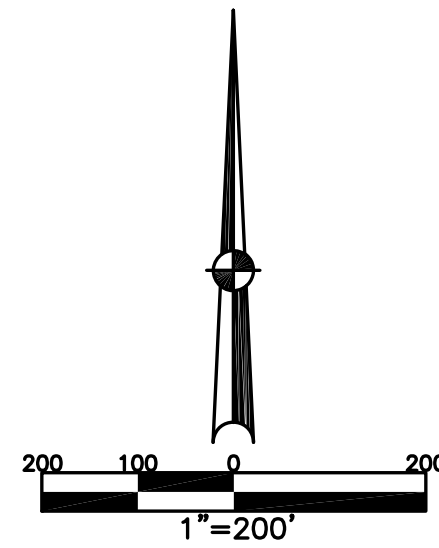


NEWTON TOWNSHIP  
MIAMI COUNTY, OHIO

SECTION 20 (PT. S.E.) TOWN 7 RANGE 5  
SECTION 29 (PT. N.E.) TOWN 7 RANGE 5

PLAT 23A



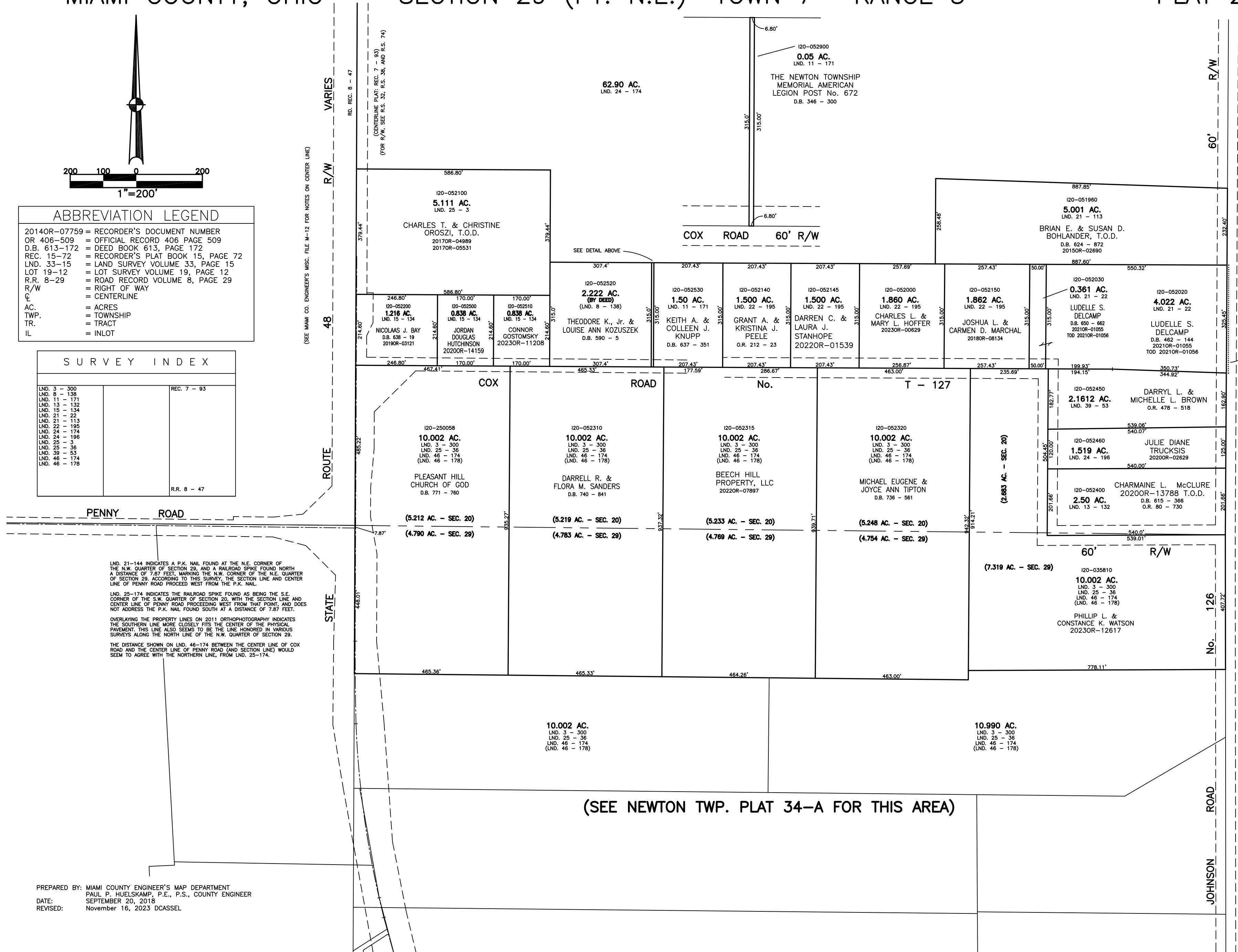
**ABBREVIATION LEGEND**

2014OR-07759 = RECORDER'S DOCUMENT NUMBER  
 OR 406-509 = OFFICIAL RECORD 406 PAGE 509  
 D.B. 613-172 = DEED BOOK 613, PAGE 172  
 REC. 15-72 = RECORDER'S PLAT BOOK 15, PAGE 72  
 LND. 33-15 = LAND SURVEY VOLUME 33, PAGE 15  
 LOT 19-12 = LOT SURVEY VOLUME 19, PAGE 12  
 R.R. 8-29 = ROAD RECORD VOLUME 8, PAGE 29  
 R/W = RIGHT OF WAY  
 C = CENTERLINE

AC. = ACRES  
 TWP. = TOWNSHIP  
 TR. = TRACT  
 IL = INLOT

**SURVEY INDEX**

LND. 3 - 300	REC. 7 - 93
LND. 8 - 139	
LND. 11 - 171	
LND. 13 - 132	
LND. 15 - 134	
LND. 21 - 22	
LND. 21 - 113	
LND. 22 - 195	
LND. 24 - 174	
LND. 24 - 196	
LND. 25 - 3	
LND. 25 - 36	
LND. 39 - 53	
LND. 46 - 174	
LND. 46 - 178	



LND. 21-144 INDICATES A P.K. NAIL FOUND AT THE N.E. CORNER OF THE N.W. QUARTER OF SECTION 29, AND A RAILROAD SPIKE FOUND NORTH A DISTANCE OF 7.87 FEET, MARKING THE N.W. CORNER OF THE N.E. QUARTER OF SECTION 29. ACCORDING TO THIS SURVEY, THE SECTION LINE AND CENTER LINE OF PENNY ROAD PROCEED WEST FROM THE P.K. NAIL.

LND. 25-174 INDICATES THE RAILROAD SPIKE FOUND AS BEING THE S.E. CORNER OF THE S.W. QUARTER OF SECTION 20, WITH THE SECTION LINE AND CENTER LINE OF PENNY ROAD PROCEEDING WEST FROM THAT POINT, AND DOES NOT ADDRESS THE P.K. NAIL FOUND SOUTH AT A DISTANCE OF 7.87 FEET.

OVERLAYING THE PROPERTY LINES ON 2011 ORTHOPHOTOGRAPHY INDICATES THE SOUTHERN LINE MORE CLOSELY FITS THE CENTER OF THE PHYSICAL PAVEMENT. THIS LINE ALSO SEEMS TO BE THE LINE HONORED IN VARIOUS SURVEYS ALONG THE NORTH LINE OF THE N.W. QUARTER OF SECTION 29.

THE DISTANCE SHOWN ON LND. 46-174 BETWEEN THE CENTER LINE OF COX ROAD AND THE CENTER LINE OF PENNY ROAD (AND SECTION LINE) WOULD SEEM TO AGREE WITH THE NORTHERN LINE, FROM LND. 25-174.

(SEE NEWTON TWP. PLAT 34-A FOR THIS AREA)

PREPARED BY: MIAMI COUNTY ENGINEER'S MAP DEPARTMENT  
 PAUL P. HUELSKAMP, P.E., P.S., COUNTY ENGINEER  
 DATE: SEPTEMBER 20, 2018  
 REVISED: November 16, 2023 DCASSEL

NOTE: DISTANCES ON NORTH AND SOUTH LINES OF THIS SURVEY SEEM TO BE IN EXCESS. SEE LAND SURVEY VOLUME 39 PAGE 33 FOR DETAIL.