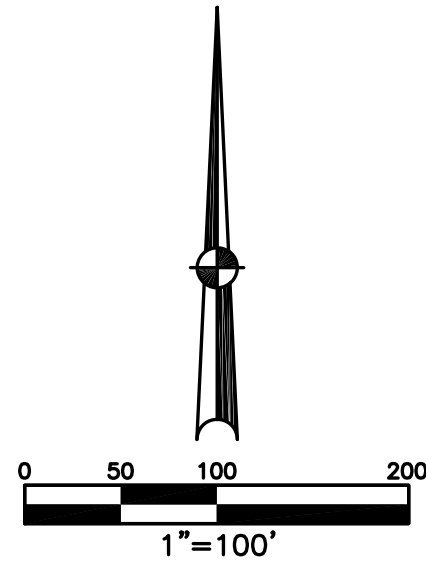


SECTION 29
TOWN 5
RANGE 6

CITY OF TROY
MIAMI COUNTY, OHIO

PLAT SW 146A

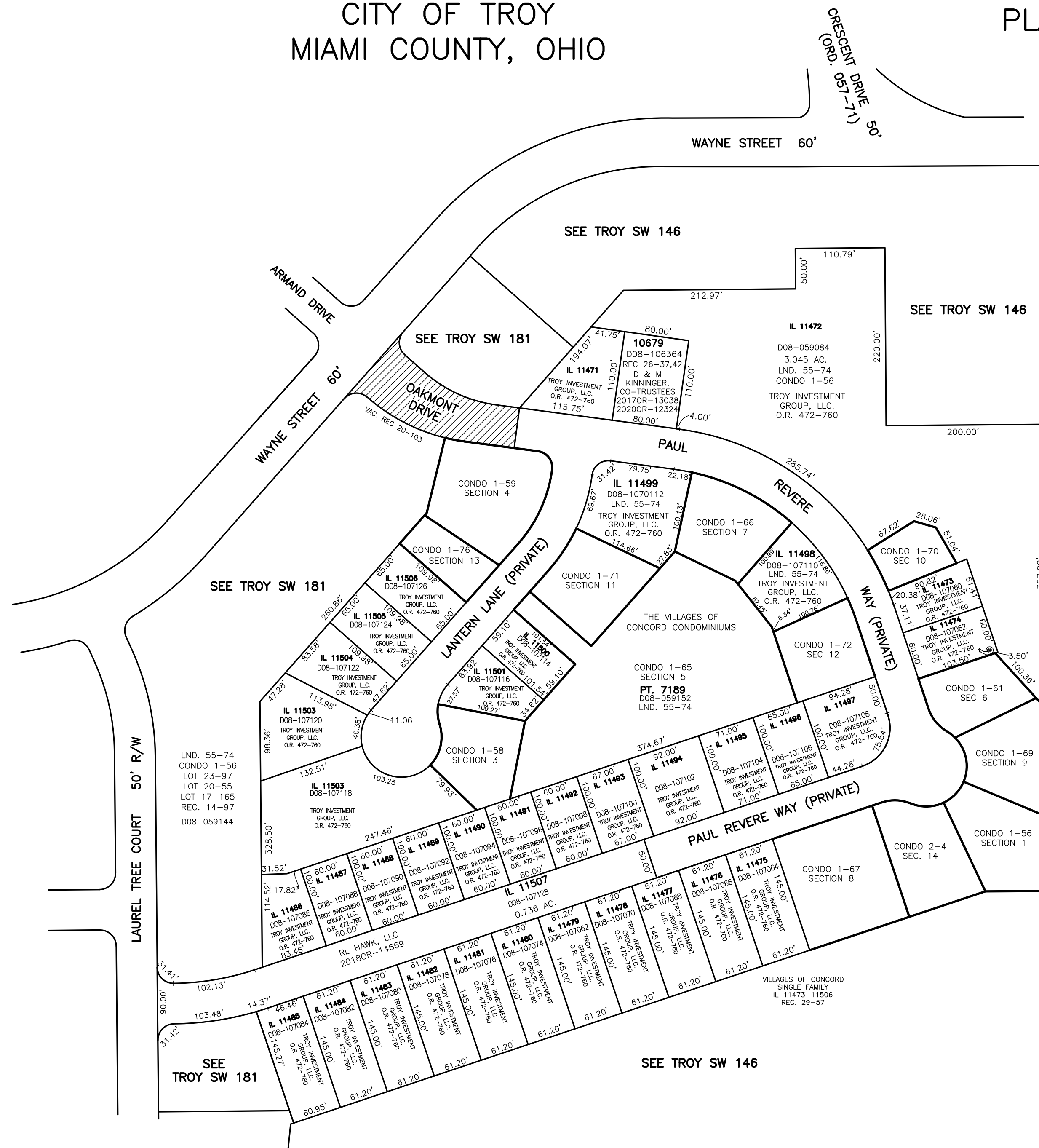
PARCEL ID NUMBER
D08-_____



ABBREVIATION LEGEND	
2014OR-07759	= RECORDER'S DOCUMENT NUMBER
OR 406-509	= OFFICIAL RECORD 406 PAGE 509
D.B. 677-326	= DEED BOOK 677, PAGE 326
REC. 18-87	= RECORDER'S PLAT BOOK 18, PAGE 87
LND. 56-145	= LAND SURVEY VOLUME 56, PAGE 145
LOT 24-200	= LOT SURVEY VOLUME 24, PAGE 200
R.R. 8-18	= ROAD RECORD VOLUME 8, PAGE 18
R/W	= RIGHT OF WAY
C	= CENTERLINE
AC.	= ACRES
TWP.	= TOWNSHIP
CONDO 1-56	= CONDOMINIUM BOOK 1, PAGE 56
IL	= INLOT

LINE LEGEND	
	Blow-up Boundary
	Property Line
	Lot Split Line
	Section Line
	Centerline
	Right-of-Way Line
	Corporation Line

SURVEY INDEX	
LND 55-74	THE VILLAGES OF CONCORD CONDOMINIUMS:
LOT 17-165	CONDO 1-56 SECTION 1
LOT 20-55	CONDO 1-58 SECTION 3
LOT 23-97	CONDO 1-59 SECTION 4
	CONDO 1-65 SECTION 5
REC 10-121	CONDO 1-61 SECTION 6
REC 14-97	CONDO 1-66 SECTION 7
REC 26-37	CONDO 1-67 SECTION 8
REC 26-42	CONDO 1-69 SECTION 9
REC 29-57	CONDO 1-70 SECTION 10
	CONDO 1-71 SECTION 11
	CONDO 1-72 SECTION 12
	CONDO 1-76 SECTION 13
	CONDO 2-4 SECTION 14



PREPARED BY: MIAMI COUNTY ENGINEER'S MAP DEPARTMENT
PAUL P. HUELSKAMP, P.E., P.S., COUNTY ENGINEER
DATE: MAY 26 2022 JZ
REVISED: May 26, 2022 JZWEZ